

---

# GEORGIA DEPARTMENT OF CORRECTIONS

## FISCAL YEAR 2003 ANNUAL REPORT

---



Sonny Perdue  
Governor

Joe Ferrero  
Acting Commissioner

# Table of Contents

From the Commissioner	2
Corrections in Fiscal Year 2003	3-5
The Prison System <i>Inmate population...security...programs...health services...inmate work...Correctional Industries...victim advocacy...death penalty</i>	6-14
Probation <i>Probation supervision...collections...community service...felons and misdemeanants...programs</i>	15-17
Fiscal Year 2003 Budget	18
Corrections Directory <i>Facilities Division regional offices...state prisons... county camps...prison boot camps...private prisons...transitional centers...detention centers...probation boot camps...diversion centers...probation regional offices...probation offices...map</i>	19-23
Organizational Chart	24
Charts and Graphs <i>Inmate populations...admissions and departures...releases...executions... costs...probationers...probation collections</i>	25-34

## Mission Statement

The mission of the Georgia Department of Corrections is to protect the public, serve victims of crime and reduce crimes committed by sentenced offenders by holding offenders accountable and providing safe and secure facilities, effective community supervision, and effective methods of self-improvement for offenders.

## From the Commissioner

To Georgia's Citizens:

During 2003, the 15,000 men and women of your Department of Corrections performed their mission of protecting the public by providing

- safe and secure facilities for Georgia's prisoners,
- effective community supervision of probationers,
- and meaningful opportunities for offenders to improve themselves.

These public servants have performed this mission in difficult circumstances. The number of offenders under our supervision continues to rise—going from 168,000 to 173,000 over this last year, while our budget has decreased from 975,000,000 to 916,000,000.

Our people met these challenges. We measure our success by the degree of safety we provide to you, our staff, and those in our custody. This year we have enhanced public safety by

- maintaining our record of zero escapes from state prisons,
- focusing additional resources on high-risk offenders who are on probation, and
- refining and preparing to expand our day report center operations, which provide substance abuse treatment and educational opportunities for probationers and parolees.

You will read more about these challenges and accomplishments as you read through this annual report.

I would also like to especially thank the 800 employees of our department who are “twice the citizen.” Not only do they serve in the Department of Corrections, but they also serve in our nation's military forces as Reservists and National Guardsmen. Over the last year, 250 of these men and women have been on active duty in Afghanistan, Iraq, and throughout the United States as a part of the Global War on Terrorism. They have my personal thanks and support. I also thank the employees who stayed behind and took up where our reservists left off. Without their additional work and sacrifice, we could not have accomplished our mission.

Finally, thank you for your support of the people of the Department of Corrections.

Sincerely,

Joe Ferrero



# Board of Corrections



The 16-member Board, appointed by the Governor, develops rules governing the conduct of Corrections employees, the care of all inmates under Corrections' custody, and the management of all probationers sentenced to community supervision.

*First District*

Kenneth T. Kennedy  
Redisville, Georgia

*Second District*

Sheriff R. Carlton Powell,  
Vice-Chairman  
Thomasville, Georgia

*Third District*

Bennie Butler-Newroth  
Columbus, Georgia

*Fourth District*

Robert L. Brown, Jr.  
Decatur, Georgia

*Fifth District*

John Irby  
Secretary  
Atlanta, Georgia

*Sixth District*

Patricia Miller  
Marietta, Georgia

*Seventh District*

Bruce Hudson  
Douglasville, Georgia

*Eighth District*

Vacant

*Ninth District*

Robert G. Vass  
Murrayville, Georgia

*Tenth District*

Sheriff Charles B. Webster,  
Chairman  
Augusta, Georgia

*Eleventh District*

Asa T. Boynton,  
Chairman  
Athens, Georgia

*Member-at-Large*

Lee New  
Marietta, Georgia

*Member-at-Large*

James Cecil Nobles  
Ludowici, Georgia

*Member-at-Large*

Charles D. Hudson  
LaGrange, Georgia

*Member-at-Large*

Sheriff J. Tyson Stephens  
Swainsboro, Georgia

*Member-at-Large*

Dr. William Whaley  
Atlanta, Georgia

## The Agency



### ***Commissioner***

Jim Wetherington  
(404) 656-6002

### ***Assistant Commissioner***

Joe Ferrero  
(404) 656-6002

### ***Programs Division***

Beth Oxford, Division Director  
(404) 656-5421

### ***Facilities Division***

James Doctor, Division Director  
(404) 656-2809

### ***Probation Division***

Alan Adams, Division Director  
(404) 656-4747

### ***Human Resources Division***

Peggy Ryan, Division Director  
(404) 656-4603

### ***Administration Division***

Diane Bell, Division Director  
(404) 651-6997

### ***Executive Office***

The Commissioner is responsible for the overall supervision of the agency.

The Assistant Commissioner, the Division Directors, Executive Assistant, Board Liaison, Legislative Services, Planning, Victim Services, Public Affairs, Legal Office, Information Technology, Correctional Industries, and Engineering & Inmate Construction report to the Commissioner's Office. The Assistant Commissioner oversees the daily operation of the agency.

### ***Facilities Division***

The Facilities Division is responsible for Georgia's inmate population. This division manages the operation of all correctional facilities and is responsible for the care and custody of all state prison inmates, those state offenders who are incarcerated in county camps and private prisons, and offenders housed in probation facilities.

### ***Programs Division***

The Programs Division provides research-based programming that is effective in reducing recidivism among offenders. The Division also manages Health Services for inmates.

### ***Probation Division***

The Probation Division provides community supervision and services to over 131,000 probationers sentenced by the courts of Georgia's 49 judicial circuits.

### ***Human Resources Division***

The Human Resources Division is responsible for the issues and systems which impact the personnel component of the agency.

### ***Administration Division***

The Administration Division provides business and technical support to the other divisions within the agency.

### ***Georgia Correctional Industries***

GCI is a self-sustained operation supported by money and generated from the manufacture and sale of its products and services. Over 1,800 inmates work each day in its prison plants, which include optics, carpentry and chemicals.

# The Corrections Continuum

## *Regular Probation Supervision*

Probationers must report to a probation officer, maintain employment, submit to drug and alcohol screens, and comply with all court-ordered requirements.

## *Intensive Probation Supervision*

When more structure is needed than other supervision levels provide, a judge can order intensive probation supervision where the probationer is closely monitored by a team of officers.

## *Specialized Probation Supervision*

Offenders who have committed sexual crimes, crimes against children or crimes of family violence may be subject to specialized, highly-monitored probation supervision.

## *Community Service*

As a condition of a sentence, a probationer may be required to provide unpaid service to their community in lieu of fines and fees.

## *Diversion Center*

A judge may order a probationer to stay at a diversion center where he works a paying job in the community and receives treatment options. The center deducts room, board, family support, restitution and fees from his paycheck.

## *Detention Center*

A probation detention center is a minimum security facility for confining offenders. The inmates perform unpaid community work, receive treatment, and are eventually released to probation supervision.

## *Boot Camp*

Boot camps combine discipline, hard work, and drug-education programs for non-violent offenders.

## *State Prison*

State prisons house violent or repeat criminals, or non-violent inmates who have exhausted all other forms of punishment.

## *County Prison*

Some low-security, long-term state prisoners are incarcerated at county work camps. They provide unpaid, yet highly-skilled work to the counties in which they are housed.

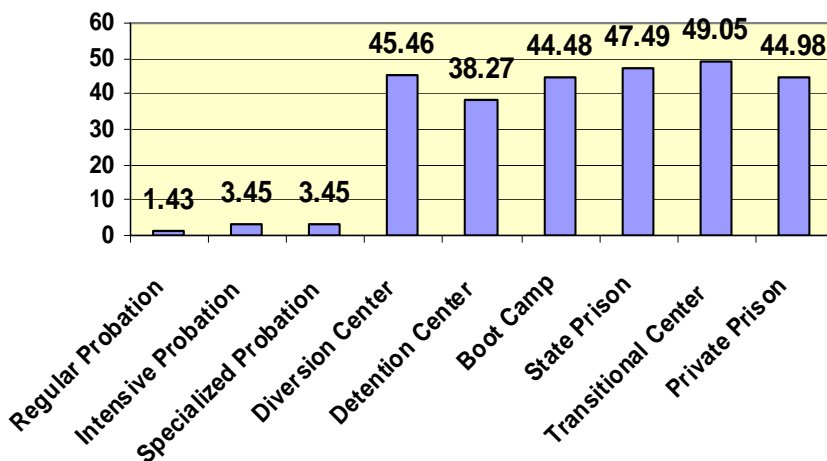
## *Private Prison*

Georgia has contracts for three 1,500-bed private prisons to house medium-security state prisoners.

## *Transitional Center*

After a long term in prison, selected inmates are slowly reintegrated back into society with a job and enhanced prospects for stability. Center residents work jobs in the private sector while residing in the transitional facility.

**Daily Cost Per Offender, By Sanction**

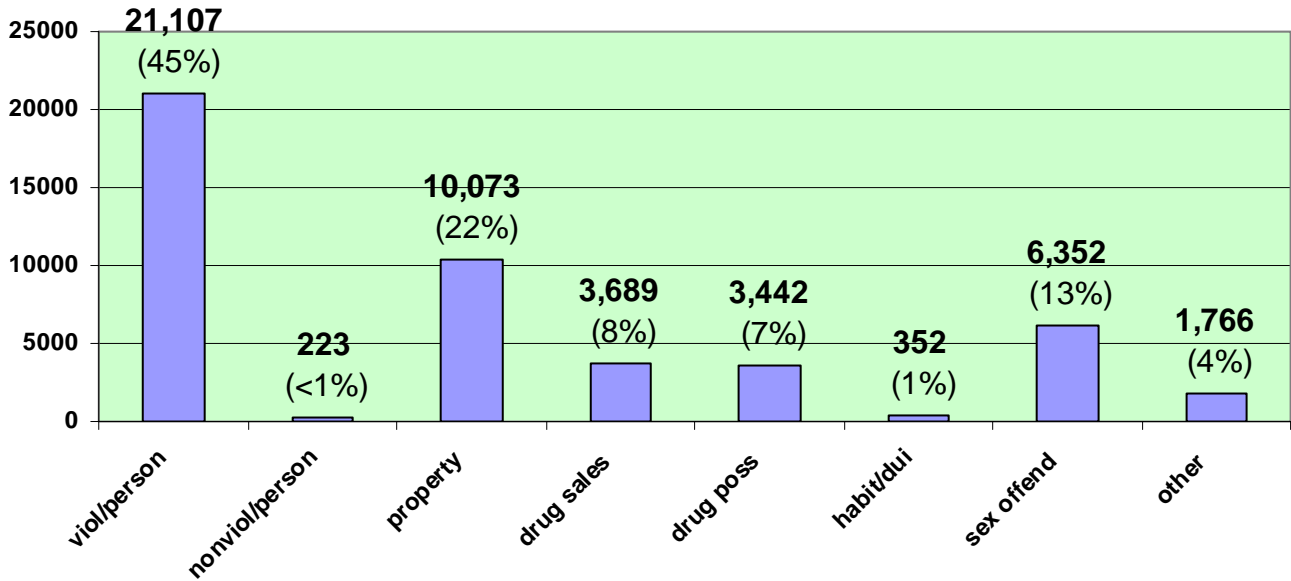


# Inmate Population

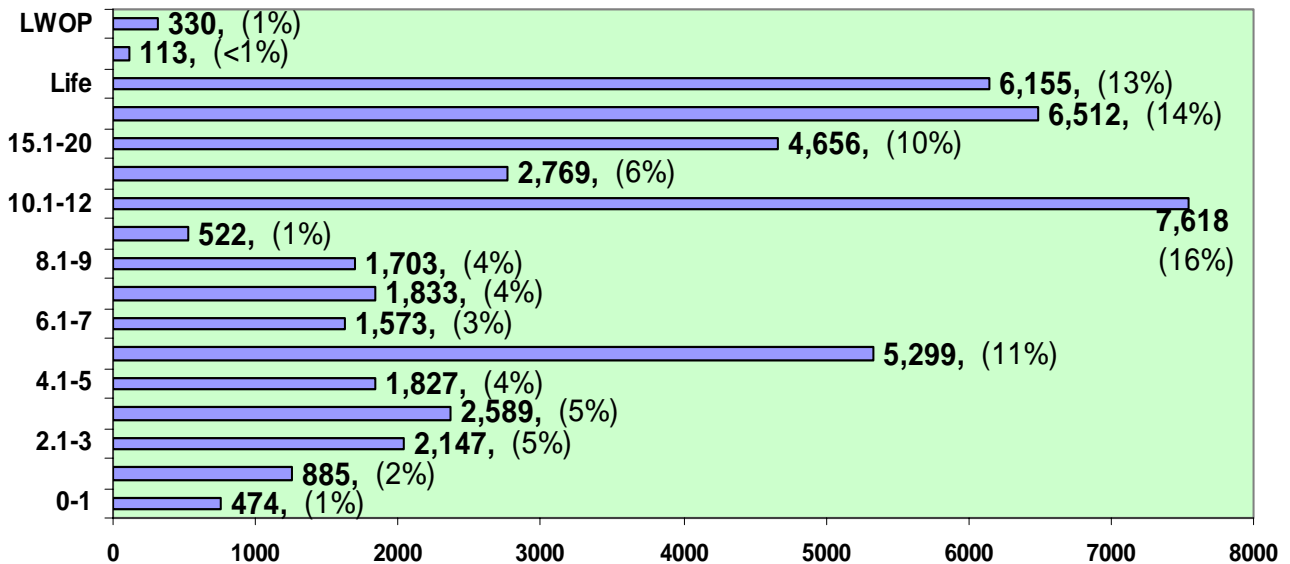
Of the 47,000 inmates in prison at the end of FY2003, over half were convicted of violent or sex crimes.

Half of Georgia's inmates have a 10th grade or lower education, were raised with no father at home, have a high incidence of alcohol and drug abuse, and were previously incarcerated.

### Active Inmates by Crime Type



### Active Inmates by Sentence Length





# Security

Georgia inmates are assigned to a security level after a review of factors such as inmate's sentence, nature of the crime, criminal history, and history of violence.

## *Maximum Security*

Dangerous inmates who pose a high escape risk, or have other serious problems, are assigned to this category and are housed in prisons with high levels of security

## *Close Security*

These inmates are escape risks, have assaultive histories, and may have detainers for other serious crimes on file. These inmates never leave the prison and require supervision at all times by a correctional officer.

## *Medium Security*

Medium security inmates have no major adjustment problems and most may work outside the prison fence, but must be under constant supervision.

## *Minimum Security*

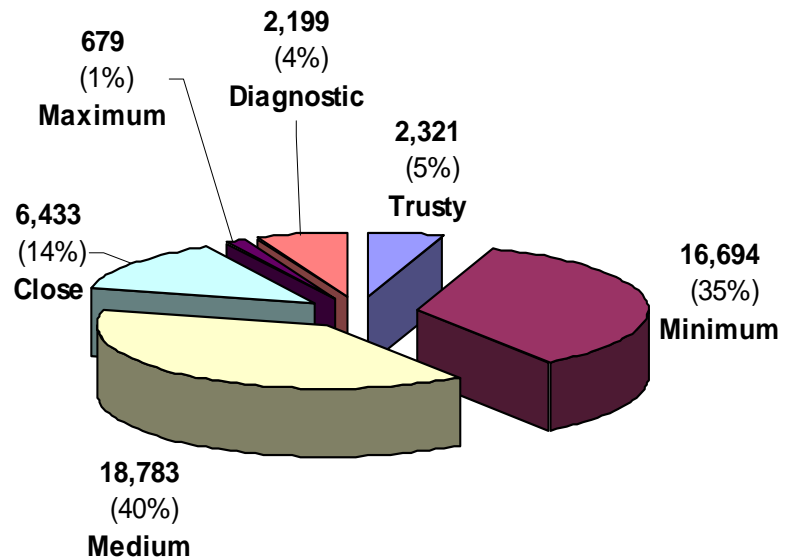
These inmates tend to abide by prison regulations, present a minimal risk of escape, and have been judged to be a minimal threat to the community.

## *Trusty Security*

An inmate assigned to this level has proven to be trustworthy, is cooperative, and has no current alcohol/drug problems.



**Active Inmates By Security Levels**



## Risk Reduction Services

Risk Reduction Services is a unit with the Georgia Department of Corrections mandated to reduce recidivism by providing research-based programs. The mission is to increase public safety by reducing recidivism.

The goals of Risk Reduction Services are to provide constitutionally mandated or legally required programs and at the same time, focus on changing criminal thinking and reducing criminal behavior through the implementation of evidenced based programs that target crime-producing behavior.

The primary targets of effective offender interventions are criminal thinking, substance abuse, education, and employment. As assessment process identifies offender risks and need which is utilized for program selection.

Academic and vocational advancement opportunities are available for offenders identified in need. Among our newest vocationally oriented programs are the Guide Dog Training and Braille Transcription Projects. These programs not only offer viable training for inmates, but also provide valuable services to the community.

Several cognitive programs designed to address criminal attitudes, beliefs and thinking have been implemented in the model demonstration sites. The Residential Substance Abuse Treatment Program benefited from an additional 160 beds, funded by a National Institute of Justice grant.

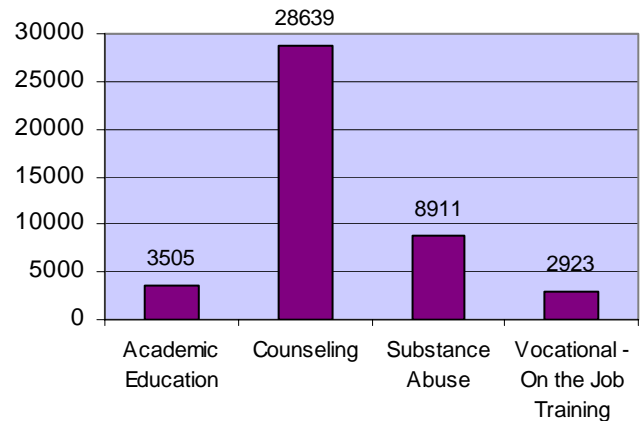


In addition, within our facilities, offenders have access to numerous counseling interventions, prison libraries and legal materials, chaplaincy services and other substance abuse programs. All incarcerated offenders receive a federally mandated one-hour of recreation per day.

Current initiatives include:

- Implementation of research-based programs at 20 model demonstration sites.
- Partnership with the National Institute of Corrections to evaluate model demonstration sites.
- Deployment of a validated assessment that identifies criminal offender risk and need
- Increase the accountability of our service delivery system

**Offender Program Completions**

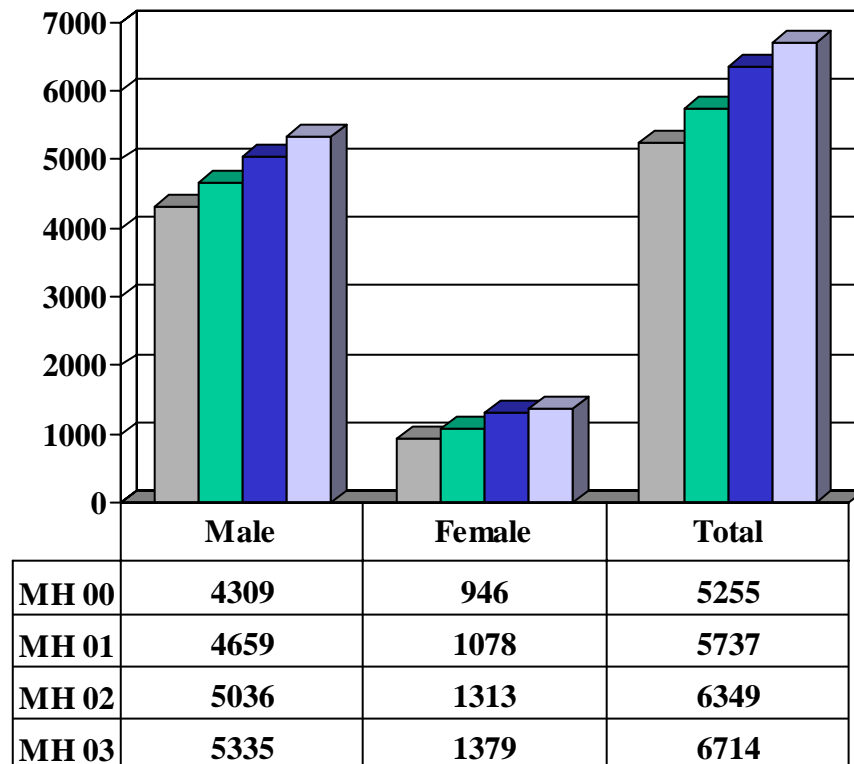


## Office of Health Services

The mission of the Office of Health Services is to provide the required constitutional level of health care in the most efficient, cost-effective, and humane manner possible, while protecting the public health interests of the citizens of the State of Georgia. During FY03 the cost of inmate health care decreased while mental health and other special needs populations continue to grow.

In FY03 the Department spent \$143,680,480 on inmate health care, including both physical and mental health. This translated into a cost/inmate/day of \$9.13, a 5% reduction from expenditures in FY02. This decrease, which was necessary as a result of the state budgetary climate, was achieved through operating with leaner staffing, maintaining tighter control over the drug formulary and strengthening utilization management of off-site care. Further, this decrease was even more remarkable given the continued growth in the number of mental health and other chronically ill inmates.

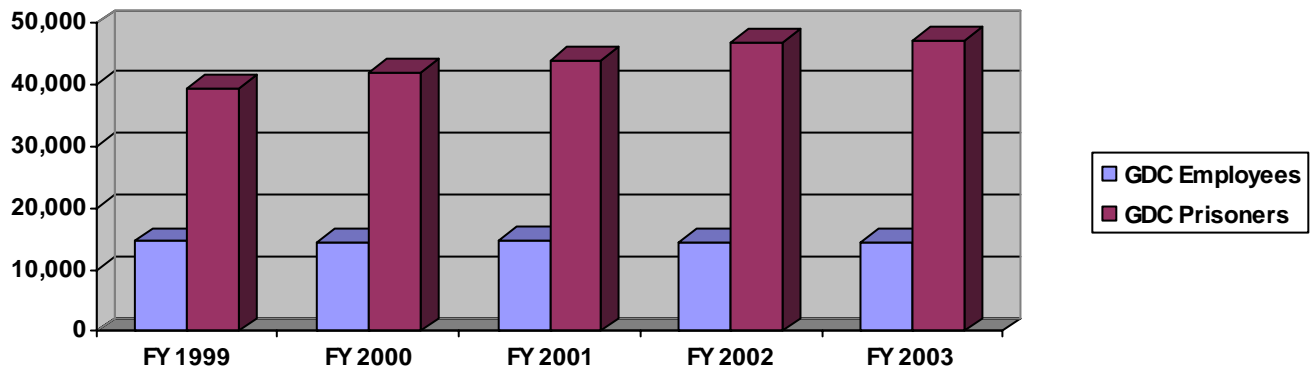
With regard to mental health caseload growth, at the end of FY03 there were 6,714 mentally ill inmates within the correctional system, compared to 6,349 a year ago. Again, at the end of FY03 approximately 14.5% of the total inmate population was on a mental health caseload, a number that has continued to increase at the rate of 1% per year.



# Human Resources

The 14,513 employees of the Georgia Department of Corrections are its most valuable resource. Central Personnel Administration provides support to these individuals by developing, coordinating, monitoring, evaluating, and administering personnel functions, department-wide. It provides oversight, consultation, technical assistance, and policy direction for correctional facilities, probation offices, and the various departmental units located across the state, which are charged with carrying out personnel functions at the local level. Major personnel functions include:

- |   |                                    |
|---|------------------------------------|
| Applicant recruitment                       | Human resources policy development |
| Applicant testing/screening                 | Job evaluation/compensation        |
| Benefits                                    | Performance Management program     |
| Computer Services                           | Records management                 |
| Critical incident debriefings               | Reprimand reviews                  |
| EEO/diversity                               | Return-to-Work program             |
| Employee assistance                         | Salary guidelines development      |
| Employee and applicant drug testing         | Selection and promotion guidelines |
| Fair Labor Standards Act administration     | Transactions                       |
| Family and Medical Leave Act Administration | Workplace harassment               |
| Grievances                                  | Workforce Planning                 |



	<b>FY1999</b>	<b>FY2000</b>	<b>FY2001</b>	<b>FY2002</b>	<b>FY2003</b>
<b>GDC Employees</b>	14,601	14,447	14,791	14,430	14,513
<b>GDC Inmates</b>	39,326	41,949	44,022	46,937	47,175

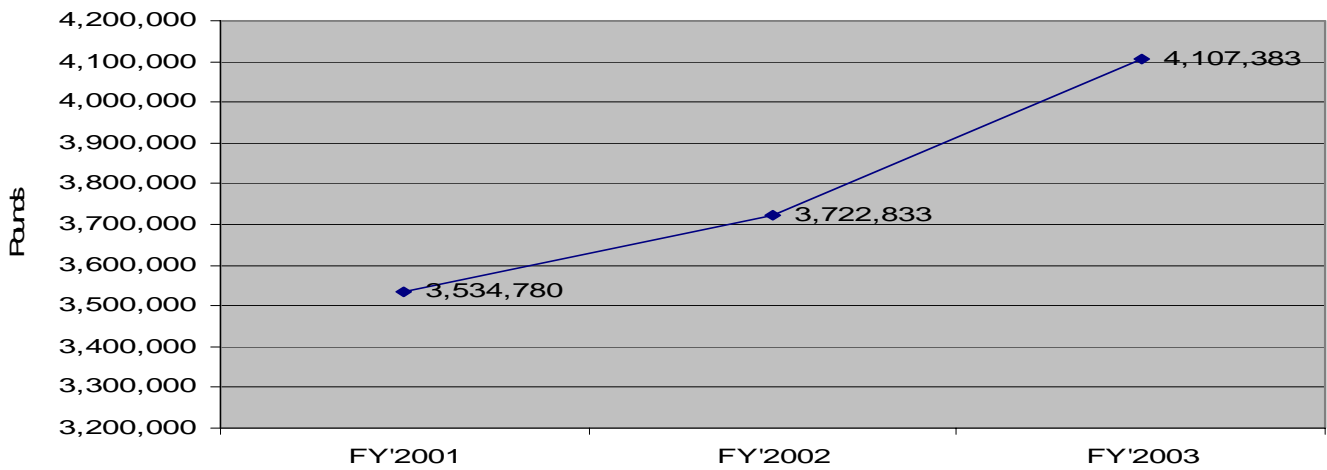
# Food and Farm

The Food and Farm Operation trains inmates in food production, processing, warehousing and preparation. Over three thousand inmates work in prison kitchens, processing plants, warehouses and on the prison farms to help provide over 38 million inmate meals annually.

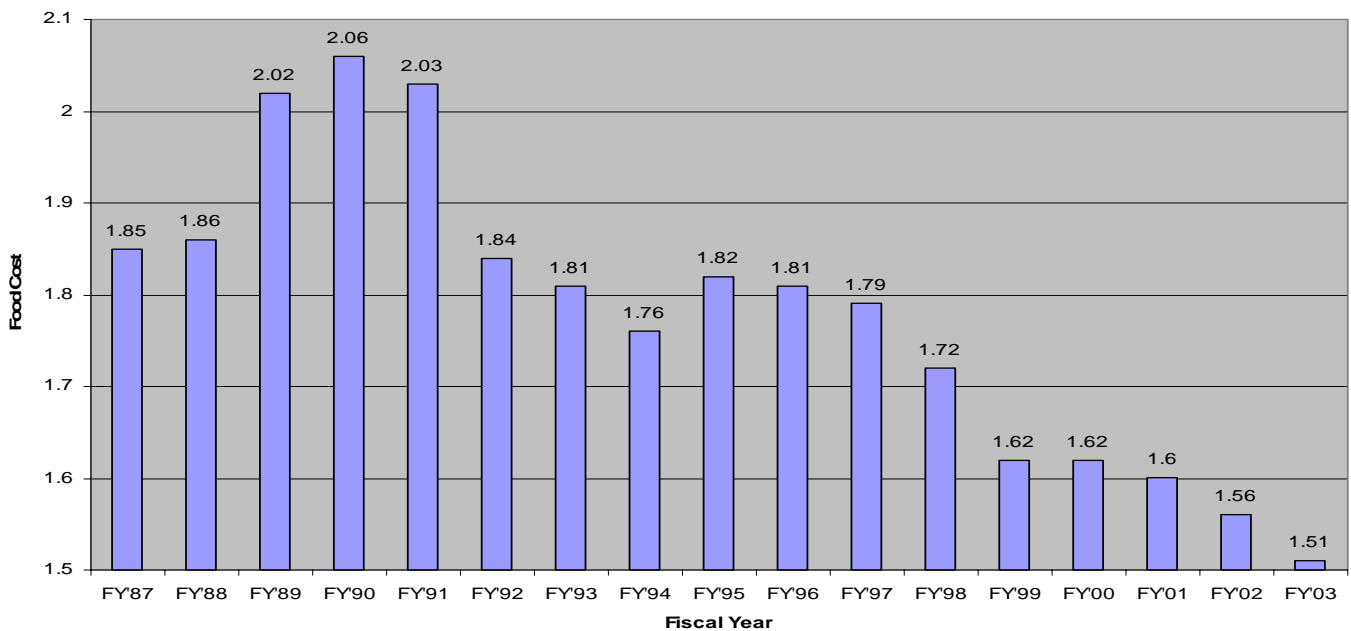
Improvements to prison farming, food processing and meal preparation has cut the average cost of an inmate meal to \$1.51 per day in FY 03 down from \$2.06 per day thirteen years ago in FY 90.

Fourty-five percent of the food consumed by Georgia inmates are produced and processed on Georgia's prison farms.

**FDU Meat Processing Production**



**GDC AVERAGE FOOD COSTS PER INMATE**



## Georgia Correctional Industries

Georgia Correctional Industries (GCI) plays a key role in meeting the public's expectation that a prison sentence be more than just idle time. It does this by operating production plants at 15 state prisons, providing job training and productive work for up to 1,800 adult inmates incarcerated in the state prison system. Inmates working in these business enterprises develop marketable skills and the positive work habits needed for post-release employment. Simultaneously, the high-quality goods and services produced by these inmates offer governmental agencies and other eligible entities a readily available source for goods and services—at competitive prices.

GCI created by the Georgia Legislature in 1960, is different from most government agencies because it is self-supporting and operates because it is self-supporting and operates solely on money generated from the manufacture and sale of its products and services. It operates a diverse, wide range of manufacturing plants, with product lines comprised of:

- Office Furniture
- Modular Workstations
- File Cabinets
- Institutional Metal Products
- Janitorial and General Cleaning Products
- Institutional Garments and Textiles
- Printing Services
- Signs and Decals
- License Plates
- Shoes
- Embroidery Services
- Mattresses and Bedding
- Hosiery
- Prescription Eyewear
- Chemical Dispensing Systems for Laundry and Dishwashing



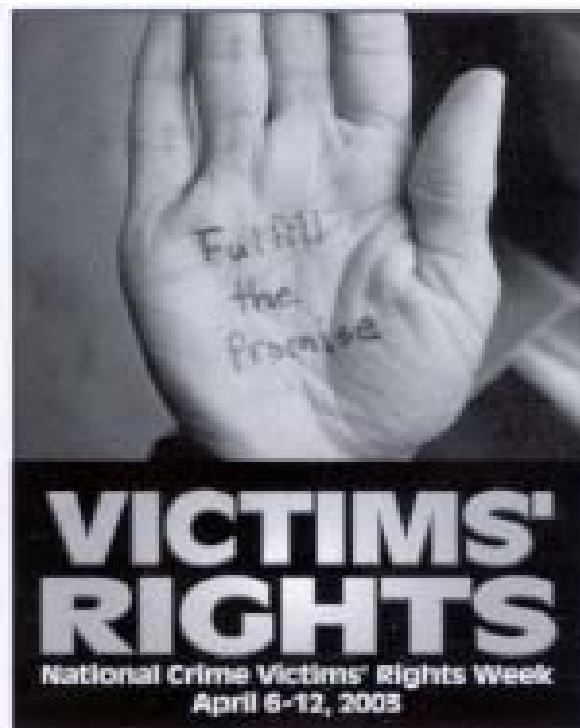
The diverse businesses operated by GCI in Georgia's prisons keep inmates productive and teach them the marketable skills they need upon release. Their unpaid labor allows GCI to pass on a cost savings to state and local governments for products and services they need. That means tax dollars saved, and that a prison sentence is more than just idle time. GCI's sales of over \$33 million in FY2003, and up to 1,800 inmates working each day in its plants, attest to GCI's continued mission accomplishment.

## Victim Advocacy

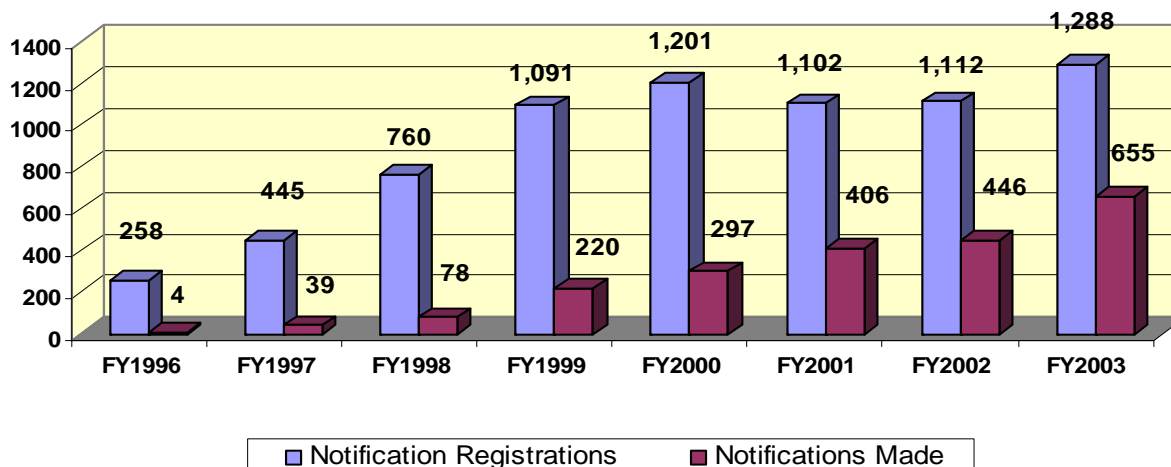
All too often victims of crime continue to need services long after their offender has been convicted and sentenced. The Georgia Department of Corrections, Office of Victim Services was created to offer post-conviction support and assistance to crime victims. The mission of this office is to work to ensure the rights and concerns of crime victims are recognized and protected during the correctional phase of the justice process.

With the passage of the Crime Victims Bill of Rights during the 1995 legislative session, crime victims were granted a number of rights including the right to request and receive “notification of the impending release of an offender from imprisonment.” The Georgia Department of Corrections responded to the passage of this legislation by developing and implementing the Crime Victim Notification Program. This program is administered by the Department’s Office of Victim Services.

The right to information is just one of many laws that protect and serve victims of crime. Through the Office of Victim Services the Georgia Department of Corrections recognizes the rights of crime victims to request and receive information pertaining to their offender. In keeping with the theme of this year’s National Crime Victims Rights Week “*Victims’ Rights: Fulfill the Promise*”, during fiscal year 2003 the Office of Victim Services registered an additional 1,288 requests from crime victims electing to exercise their right to receive notification of an inmate’s release from custody. From the inception of the victim notification program through the end of fiscal year 2003 the Office of Victim Services has received and registered a total of 7,257 requests for victim notification.



Crime Victim Notification Program



# Death Penalty in Georgia

A law, passed in FY00, changed the legal method of execution in Georgia from electrocution to lethal injection, effective for crimes committed on or after May 1, 2000. Anyone who commits a capital crime and receives a death sentence, will be executed by lethal injection.

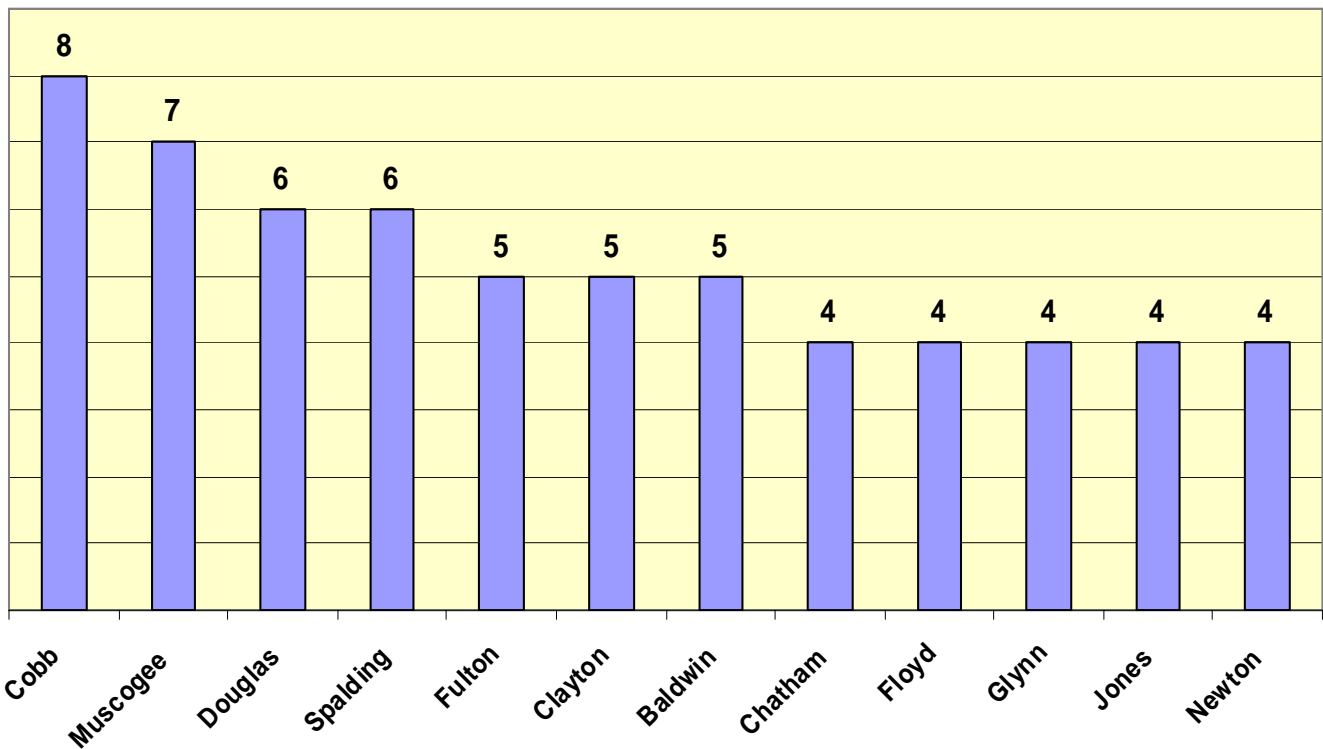
In Georgia, 29 men have been executed since the U.S. Supreme Court upheld Georgia's death penalty in 1976.

Georgia had 113 inmates on death row by the end of FY03. Whites and non-white equally comprise the total with 50% each.

All male death row inmates are incarcerated at the Georgia Diagnostic and Classification Prison in Jackson. One female is on death row at Metro State Prison in Atlanta.

Four inmates were executed in FY2003.

**Number of Inmates on Death Row by County  
(Top 12 Counties Only)**





## Probation

Probation is the most frequently used sentencing option in Georgia. During FY03, more than twice as many offenders were admitted to probation (37,093) as were admitted to prison (17,163). The Probation Division supervises 64% of all offenders under state correctional supervision. Prisons and other residential facilities supervise 26% and Parole supervises 10% of the state correctional population.

At the beginning of the fiscal year, the Probation Division was expanded to include the administration and operation of the Probation Diversion Centers. This realignment of responsibilities facilitates the movement of offenders between the field and the centers, better serving the public and the courts.

The Probation Division consists of a division office, three regional offices for field supervision, one regional office for center operations, 121 field offices, 16 diversion centers, and the Bainbridge Probation Substance Abuse Treatment Center.

## Programs

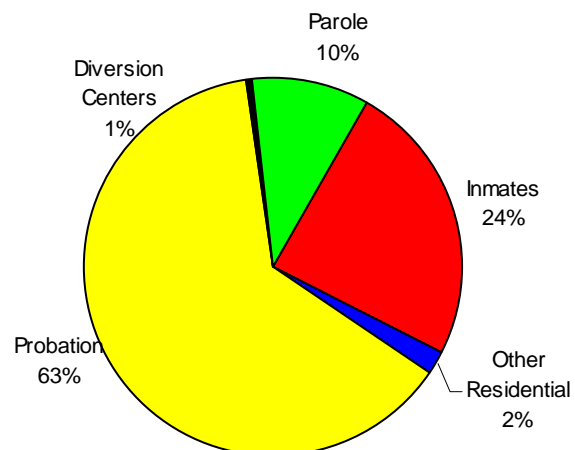
Part of good probation field supervision is ensuring that offenders have the opportunity to rehabilitate themselves. Rehabilitation is a long-term strategy of enhancing public safety by preventing future crimes. Because the offenders must eventually function on their own in the community, there is an emphasis on helping them find appropriate treatment services in the local area.

Working with an offender population presents special challenges for some treatment providers and not all providers are able to meet this challenge. Accordingly, the Probation Division now maintains a list of treatment providers who have the appropriate credentials and have agreed to abide by conditions set forth by the state.

FY03 was a year of huge growth in programming for probationers in both the centers and the field. While the referral system for treatment in the community continued, programming for probationers was also expanded with the Demonstration Model Sites. These sites, in offices and diversion centers around the state, provide treatment using the “What Works” literature as a base.

“What Works” is the name given to a collection of conclusions drawn by D.A. Andrews and Paul Gendreau as a result of their meta-analysis studies of correctional programs in the early 1990’s. Their work, identifying the programs that were successful as well as those that were not, has become the foundation of program development and operation nationwide. Initiatives based on the successful programs identified by the “What Works” studies are characterized by behavior-based treatment, timeframes of three to nine months, and extensive use of the offender’s time during that period.

**State Adult Offenders**



The issues that are viewed as most important to offender accountability and rehabilitation in the “What Works” literature are the core areas addressed in the correctional programming offered to probationers in the demonstration model sites. These are: cognitive/behavioral, substance abuse, employment and education. Probation Division staff are working with the Risk Reduction Services staff to ensure that the tenets of “What Works” are incorporated into all programming offered to probationers.

One of the problems that has plagued the offender population for years is substance abuse. Some studies have suggested that up to 85% of the offender population has problems with either alcohol or drugs.

According to studies by the Substance Abuse and Mental Health Services Administration (SAMHSA), an agency of the U.S. Department of Health and Human Services, frequent testing for substance abuse is an essential part of any substance abuse regimen. In fact, some studies by SAMHSA indicate that testing alone will deter substance abuse.

In addition to supporting offender participation in substance abuse primary care through in-house or referral services, the Probation Division also supports an Aftercare Program for those offenders who complete the primary care programs.

### Technology

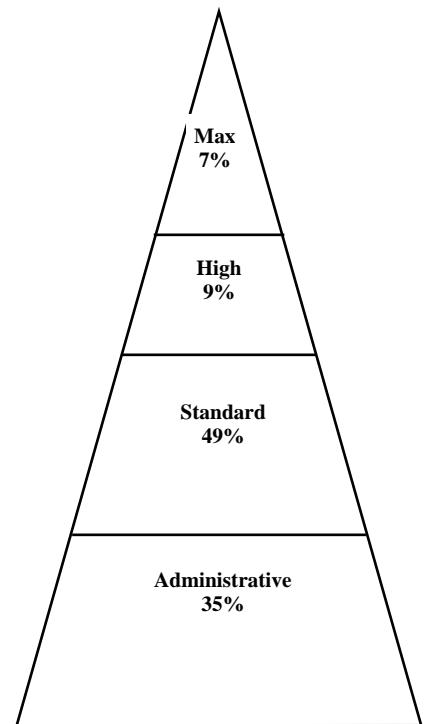
The automated case management information system, SCRIBE, was implemented in all Probation Field Offices during FY02 and in all diversion centers during FY03. All case noted as well as criminal and demographic data about probationers are available through computers on the officers’ desks.

In addition to adding convenience, the SCRIBE system allows the officers to hold offenders more accountable by making information about the offenders immediately available to all authorized users.

### Operations

In July 2002, the administration of the diversion centers was moved to the Probation Division, formalizing a relationship that had already existed. Probationers in diversion centers often have already been on probation and in almost all cases, will be under probation supervision when they complete the diversion center team.

Although the offenders housed in the diversion centers and those supervised under field supervision are very similar, the operations of the two modalities are significantly different. Each has its own challenges, advantages, and disadvantages.



### Probation Caseloads by Supervision Level

Probationers are Managed According to their Risk and Needs

**Max:** Violent offenders, sexual offenders, predators against children, and other extremely risky offenders.

**High:** Career criminals, violent offenders, predators, and others with significant risk to the community.

**Standard:** Mostly nonviolent offenders and those who still owe court-ordered monies. This category may include violent offenders who have shown adherence to the conditions of probation.

**Administrative:** Offenders who have met all financial obligations and those who have been moved to

In 1996, the Probation Division implemented the Risk Based Supervision Mode. In simple terms, this is a redistribution of activities geared toward devoting more time and effort to those offenders who pose the most risk to the community. The supervision levels of offenders are assigned based on the results of an assessment instrument administered at intake and the reassessment instrument that is repeated throughout the supervision period.

Overall the probationer population grew by 3.5% over the past year. However, due to the new supervision model and other efficiencies, the average Standard/Administrative caseload dropped to 221 probationers per officer, a drop of 14% from the previous year.

Level/Type	Number of Offenders— End of FY03	Percentage of Population— End of FY03	FY03 Model
Max	2,682	2.1%	3 contacts: 1 face-to-face field contact and 1 quality face-to-face office contact and 1 quality face-to-face field collateral contact. (A face-to-face field contact can replace the office or collateral contact.
IPS	4,159	3.3%	For the first six months of supervision, all offenders are supervised with 4 contacts per month. Thereafter, contact requirements are based on the assessed classification level.
SPS	4,879	3.9%	Contact requirements are based on the assessed classification level plus one additional contact per month.
High	4,036	3.2%	2 contacts: 1 face-to-face field contact and 1 quality face-to-face office or field collateral contact. (A face-to-face field contact can replace the collateral contact.
Medium	13,670	10.9%	1 face-to-face contact (field or office) per month PLUS 1 quality face-to-face field collateral contact per quarter. (A face-to-face field contact can replace the collateral contact.)
Standard	43,243	34.4%	1 compliance check in the form of an office or field visit, quality collateral contact, telephone contact, mailed report or financial review.
Administrative	53,058	42.2%	Monitoring of address, employment, and other key conditions.

*Specialized Probation Supervision (SPS)* is a statewide program specifically for offenders who commit sexual crimes. Each circuit has at least one officer specially trained to supervise and SPS caseload. SPS is highly restrictive and structured. Travel and computer access are often curtailed, and offenders are required to keep the assigned probation officer aware of their whereabouts and activities. Probationers assigned to SPS are typically required to attend treatment by a certified provider. Sanctions are enforced if the probationer fails to attend and actively participate in treatment. It is the goal of the Probation Division to protect the community from further victimization by sex offenders by maintaining specialized standards of supervision, providing support to victims, and ensuring the offenders receive the most effective treatment possible.

During FY03, SPS was re-evaluated by a select group of field practitioners. The evaluation resulted in changes to the optimal contact requirements and the addition of a new assessment tool. In addition to the contacts required by the assessed classification of the offender, another contact must be made with each sex offender each month. The Static 99 is used to assess the offender's needs and risks associated specifically with sexual behavior.

### **Center Operations**

The Director of Center Operations is responsible for the operation of diversion centers and the Bainbridge Probation Substance Abuse Treatment Center (BPSATC). Restitution centers were created in the 1970's and evolved over time to diversion centers. Offenders may be sentenced directly to a center or may be sent there as part of a revocation or sentence modification. The centers are residential by probationers hold jobs in the local community. All paychecks are sent directly to the centers, which deduct room and board, restitution, fines, fees, and other court ordered monies before depositing the remainder in an account for the probationer.

# Corrections' FY03 Budget

## FY03 Expenditures

Personal Services	\$567,712,907
Regular Operating	62,875,636
Travel	1,640,819
Motor Vehicle Purchases	1,083,265
Equipment	3,837,249
Computer Charges	5,252,463
Real Estate Rentals	7,862,898
Telecommunications	7,894,025
Per Diem, Fees & Contracts	258,120
Capital Outlay	12,052,301
Utilities	25,843,796
Health Services Purchases	133,951,974
Court Costs	1,278,260
County Subsidy	36,737,700
County Subsidy for Jails	11,621,740
Central Repair Fund	893,624
Meal Payments ( Central State Hospital)	4,268,024
Utility Payments (Central State Hospital)	1,627,149
Meal Payments—Public Safety	577,160
Inmate Release Fund	1,356,487
Contracts (UGA Extension Service)	461,824
Minor Construction Fund	752,998
<b>TOTAL FY2003 EXPENDITURES</b>	<b>\$975,444,054</b>
(\$943,297,734 in state funds)	

The Georgia Department of Corrections' FY2003 expenditures totaled about \$975.4 million. Over \$32.1 million of that amount was in non-state funds that came from federal funds (such as child nutrition, substance abuse, and violent offender incarceration); room and board fees from diversion center residents; receipts from county, city and DOT work details; monies from central project telephone funds; and other miscellaneous fund sources. Additional non-state funds that we collect that are not included in the budget (but are remitted directly to the State Treasury) are \$10,537,920 in probation and crime lab fees from probationers; \$1,789,282 in room and board fees from transitional center residents; and \$6,767 in other miscellaneous monies. Also not included are \$1,465,227 in victim's fees that we collected from probationers and submitted directly to the Office of Planning and Budget for the Georgia Crime Victims Emergency Fund.

# Directory

## Facility Regional Offices

### Northern Region

P.O. Box 17765  
Atlanta, GA 30316  
(404) 635-7173

### Central Region

P.O. Box 278  
Hardwick, GA  
31034  
(478) 445-4383

### Southeast Region

HCO1  
Reidsville, GA  
30453  
(912) 557-7707

### Southwest Region

6501 Veteran's  
Parkway  
Suite 1-D  
Columbus, GA  
31909  
(706) 649-1999

## State Prisons

### Lee Arrendale State Prison

P.O. Box 709  
Alto, GA 30510  
(706) 776-4700

### Augusta State Medical Prison

3001 Gordon Hwy.  
Grovetown, GA  
30813  
(706) 855-4700

### Autry State Prison

P.O. Box 648  
Pelham, GA 31779  
(229) 294-2940

### Baldwin State Prison

P.O. Box 218  
Hardwick, GA  
31034  
(478) 445-5218

### Bostick State Prison

P.O. Box 1700  
Hardwick, GA  
31034  
(478) 445-4623

### Burruss CTC

P.O. 5849  
Forsyth, GA 31029  
(478) 994-7511

### Calhoun State Prison

P.O. Box 249  
Morgan, GA 39866  
(229) 849-5000

### Central State Prison

4600 Fulton Mill Rd  
Macon, GA 31208  
(478) 471-2906

### Coastal State Prison

P.O. Box 7150  
Garden City, GA  
31418  
(912) 965-6330

### Dodge State Prison

P.O. Box 276  
Chester, GA 310

### Dooly State Prison

P.O. Box 750  
Unadilla, GA 31091  
(478) 627-2000

### Georgia Diagnostic & Classification Prison

P.O. Box 3877  
Jackson, GA 30233  
(770) 504-2000

### Georgia State Prison

200 GA Hwy. 147  
Reidsville, GA  
30453  
(912) 557-7301

### Hancock State Prison

P.O. Box 339  
Sparta, GA 31087  
(706) 444-1000

### Hays State Prison

P.O. Box 668  
Trion, GA 30753  
(706) 857-0400

### Homerville State Prison

P.O. Box 337  
Homerville, GA  
31634  
(912) 487-3052

### Johnson State Prison

P.O. Box 344  
Wrightsville, GA  
31096  
(478) 864-4100

### Lee State Prison

153 Pinewood Dr.  
Leesburg, GA  
31763  
(229) 759-6453

### Macon State Prison

P.O. Box 426  
Oglethorpe, GA  
31068  
(478) 472-3400

### Men's State Prison

P.O. Box 396  
Hardwick, GA  
31034  
(478) 445-4702

### Metro State Prison

1301 Constitution  
Road  
Atlanta, GA 30316  
(404) 624-2200

### Milan State Prison

P.O. Box 410  
Milan, GA 31060  
(229) 362-4900

### Montgomery State Prison

P.O. Box 256  
Mt. Vernon, GA  
30445  
(912) 583-3600

### Phillips State Prison

2989 W. Rock  
Quarry Road  
Buford, GA 30519  
(770) 932-4500

### Pulaski State Prison

P.O. Box 839  
Hawkinsville, GA  
31036  
(478) 783-6000

### Putnam State Prison

P.O. Box 3970  
Eatonton, GA  
31024  
(706) 484-2900

### Rivers State Prison

P.O. Box 1500  
Hardwick, GA  
31034  
(478) 445-4591

### Rogers State Prison

200 Rogers Road  
Reidsville, GA  
30453  
(912) 557-7771

### Rutledge State Prison

P.O. Box 8409  
7175 Manor Road  
Columbus, GA  
31908  
(706) 568-2340

### Scott State Prison

P.O. Box 417  
Hardwick, GA  
31034  
(478) 445-5375

### Smith State Prison

P.O. Box 726  
Glennville, GA  
30427  
(912) 654-5000

### Telfair State Prison

P.O. Box 549  
Helena, GA 31037  
(229) 868-7721

### Valdosta State Prison

P.O. Box 310  
Valdosta, GA  
31603  
(229) 333-7900

### Walker State Prison

P.O. Box 98  
Rock Springs, GA  
30739  
(706) 764-3600

### Ware State Prison

3620 Harris Road  
Waycross, GA  
31503  
(912) 285-6400

### Washington State Prison

P.O. Box 206  
13262 Hwy. 24E  
Davisboro, GA  
31018  
(478) 348-5814

### Wayne State Prison

P.O. Box 219  
Odum, GA 31555  
(912) 586-2244

### Wilcox State Prison

P.O. Box 397  
Abbeville, GA  
31001  
(229) 467-3000

## County Camps

### Athens/Clarke CCI

2825 County Farm  
Rd.  
Augusta, GA 30605  
(706) 613-3400

### Augusta/Richmond CCI

2314 Tobacco Road  
Augusta, GA 30906  
(706) 798-5572

### Bulloch CCI

17301 U.S. 301  
North  
Statesboro, GA  
30458  
(912) 764-6217

### Carroll Co. Prison

96 Horsley Mill Rd.  
Carrollton, GA  
30458  
(912) 764-6217

### Clayton CCI

P.O. Box 309  
11420 S.L. R. Blvd.  
Lovejoy, GA 30250  
(770) 830-5905

### Colquitt Co. Prison

P.O. Box 339  
2010 County Farm  
Road  
Moultrie, GA  
31776  
(229) 616-7490

### Coweta Co. Prison

101 Selt Road  
Newnan, GA 30263  
(770) 254-3723

### Decatur CCI

1153 Airport Road  
Bainbridge, GA  
39817  
(229) 248-3036

### Effingham Co. Prison

P.O. Box 235  
Springfield, GA  
31329  
(912) 754-2108

### Floyd Co. Prison

329 Black Bluff  
Rd., SW  
Rome, GA 30161  
(706) 236-2491

### Gwinnett CCI

750 High Hope Rd.  
Lawrenceville, GA  
30043  
(678) 407-6000

### Hall CCI

1694 Barber Road  
Gainesville, GA  
30507  
(770) 536-3672

### Harris CCI

9982 GA Hwy. 116  
Hamilton, GA  
31811  
(706) 628-4959

### Jackson CCI

255 Curtis Spence  
Dr.  
Jefferson, GA  
30549  
(706) 367-5287

### Jefferson CCI

1159 Clarks Mill  
Rd.  
Louisville, GA  
30434  
(478) 625-7230

### Mitchell CCI

4838 Hwy. 37 East  
Camilla, GA 31730  
(229) 336-2045

### Muscogee Co. Prison

7175 Sacredote  
Lane  
Columbus, GA  
31907  
(706) 561-3220

### Screven CCI

P.O. Box 377  
Sylvania, GA  
30467  
(912) 863-4555

### Spalding CCI

295 Justice Blvd.  
Griffin, GA 30224  
(770) 467-4760

### Stewart CCI

P.O. Box 157  
Lumpkin, GA  
31815  
(229) 838-4385

### Sumter CCI

346 McMathmill  
Road  
Americus, GA  
31709  
(229) 928-4582

### Terrell CCI

3110 Albany Hwy.  
Dawson, GA 31742  
(229) 995-5381

### Thomas Co. Prison

116 Joiner Road  
Thomasville, GA  
31757  
(229) 226-4394

### Troup CCI

2508 Hamilton  
Road  
LaGrange, GA  
30240  
(706) 883-1720

# Directory

## Private Prisons

**Coffee County Prison** (Corrections Corp. of America)  
P.O. Box 650  
Nicholls, GA 31554  
(912) 345-5058

**D. Ray James State Prison** (Cornell Corporation)  
Highway 252  
Folkston, GA 31537  
(912) 496-6242

**Wheeler County Prison** (Corrections Corp. of America)  
1100 North Broad St.  
Alamo, GA 30411  
(912) 568-1731

## Prison Boot Camps

**Baldwin BC**  
P.O. Box 218  
Hardwick, GA 31034  
(478) 445-5218

**Burruss BC**  
P.O. Box 5849  
Forsyth, GA 21029  
(478) 994-7511

**Hays BC**  
P.O. Box 668  
Trion, GA 30753  
(706) 857-0400

**Montgomery BC**  
P.O. Box 256  
Mt. Vernon, GA 30445  
(912) 583-3600

**Scott BC**  
P.O. Box 417  
Hardwick, GA 31034  
(478) 445-5375

## Transitional Centers

**Albany TC**  
304 N. Washington St.  
Albany, GA 31701  
(229) 430-3888

**Atlanta TC**  
P.O. Box 54177  
332 Ponce de Leon Ave., NE  
Atlanta, GA 30308  
(404) 206-5103

**Augusta TC**  
601 Taylor Street  
Augusta, GA 30901  
(706) 721-1650

**Macon TC**  
1100 Second Street  
Macon, GA 31201  
(478) 751-6090

**Metro Women's TC**  
1303 Constitution Rd.  
Atlanta, GA 30316  
(404) 624-2380

**Savannah Men's TC**  
1250 E. Presidents Street  
Savannah, GA 31404  
(912) 651-6372

**Savannah Women's TC**  
439 East Broad St.  
Savannah, GA 31401  
(912) 651-2268

## Probation Detention Centers

**Bainbridge PSATC**  
P.O. Box 1010  
Bainbridge, GA 31718  
(229) 248-2463

**Central PDC**  
P.O. Box 190  
Cadwell, GA 31009  
(478) 689-4750

**Colwell PDC**  
797 Beasley Street  
Blairsville, GA 30512  
(706) 745-3610

**I.W. Davis PDC**  
P.O. Box 730  
Jefferson, GA 30549  
(706) 367-1732

**Davisboro Women's PDC**  
P.O. Box 128  
Davisboro, GA 31018  
(478) 348-2348

**Emanuel Co. PDC**  
P.O. Box 1430  
Twin City, GA 30471  
(478) 763-2400

**J.C. Larmore PDC**  
P.O. Box 491419  
College Park, GA 30349  
(770) 306-6942

**Virgil W. McEver, Jr. PDC**  
P.O. Box 1480  
2100 King's Chapel Rd.  
Perry, GA 31069  
(478) 988-7024

**Northwest PDC**  
1030 W. Gurrard St.  
Cedartown, GA 30125  
(770) 749-2300

**Patten PDC**  
P.O. Box 278  
Lakeland, GA 31635  
(229) 482-8241

**Paulding Co. PDC**  
1295 Industrial Blvd. N  
Dallas, GA 30132  
(770) 443-7807

**Rockdale-Dekalb PDC**  
2165 Chambers Dr.  
Conyers, GA 30012  
(770) 388-5777

**Southeast PDC**  
P.O. Box 869  
Claxton, GA 30417  
(912) 739-1911

**Southwest PDC**  
P.O. Box 3188  
Moultrie, GA 31776  
(229) 995-6701

**Terrell Co. PDC**  
P.O. Box 779  
Dawson, GA 31742  
(229) 995-6701

**Western PDC**  
P.O. Box 2250  
Butler, GA 31006  
(478) 862-5851

**West Georgia PDC**  
P.O. Box 589  
Zebulon, GA 30295  
(770) 567-0531

**Whitworth PDC**  
P.O. Box 769  
Hartwell, GA 30643  
(706) 856-2601

**Women's PDC**  
P.O. Box 920  
Claxton, GA 30417  
(912) 739-0716

## Probation Boot Camps

**Treutlen PBC**  
P.O. Box 707  
Soperton, GA 30457  
(912) 529-6760

**West GA PBC**  
P.O. Box 690  
Bremen, GA 30110  
(770) 537-5143

## Diversion Centers

**Albany DC**  
P.O. Box 50188  
Albany, GA 31703  
(229) 430-4306

**Alcovy DC**  
P.O. Box 1600  
Monroe, GA 30655  
(770) 207-4171

**Athens DC**  
P.O. Box 1229  
Athens, GA 30603  
(706) 542-8628

**Augusta DC**  
P.O. Box 5706  
Augusta, GA 30906  
(706) 771-4763

**Clayton DC**  
P.O. Box 2283  
Forest Park, GA 30298  
(404) 363-7680

**Cobb DC**  
831 North Cobb Pkwy.  
Marietta, GA 30062  
(770) 528-5300

**Columbus DC**  
3900 Schatulga Rd  
Columbus, GA 31907  
(706) 568-2167

**Gainesville DC**  
1002 Aviation Blvd  
Gainesville GA 30501  
(770) 535-5723

**Gateway DC**  
1102 Sylvan Road  
Atlanta, GA 30310  
(404) 756-4600

**Griffin DC**  
P.O. Box 1086  
Griffin, GA 30224  
(770) 229-3327

**Helms DC**  
1275 Constitution Rd  
Atlanta, GA 30316  
(404) 624-2413

**Macon DC**  
200 Henry Street  
Macon, GA 31206  
(478) 751-6197

**Rome DC**  
Northwest Regional Hospital  
1305 Redmond Rd.  
Bldg. 206  
Rome, GA 30161  
(706) 295-6418

**Savannah DC**  
1303 E. President St.  
Savannah, GA 31404  
(912) 651-2733

**Thomasville DC**  
P.O. Box 980  
Thomasville, GA 31799  
(229) 225-4025

**Tommy M. Rouse DC**  
P.O. Box 759  
Waycross, GA 31502  
(912) 285-6028

## Field Probation Offices

**Acworth PO**  
P.O. Box 910  
Marietta, GA 30061  
(770) 528-7950

**Adel PO**  
208 N. Parrish Ave  
Adel, GA 31620  
(229) 896-7525

**Albany PO**  
P.O. Box 822  
Albany, GA 31702  
(229) 430-4182

**Americus PO**  
P.O. Box 226  
Americus, GA 31709  
(229) 931-2537

**Appling PO**  
P.O. Box 344  
Appling, GA 30802  
(706) 541-0033

**Athens PO**  
P.O. Box 1146  
Athens, GA 30603  
(706) 369-6000

**Atlanta-Central PO**  
353 Parkway Dr.  
Atlanta, GA 30312  
(404) 463-4333

**Atlanta Day Report Center**  
3201 Atlanta Industrial Pkwy.  
Suite 101  
Atlanta, GA 30331  
(404) 699-5151

**Atlanta PO**  
160 Pryor Street  
Room JG-54  
Atlanta, GA 30303  
(404) 656-4600

**Atlanta PO (Court Services)**  
160 Pryor Street  
JG-54  
Atlanta, GA 30303  
(404) 656-4600

**Atlanta PO (Transfer)**  
160 Pryor Street  
JG-54  
Atlanta, GA 30303  
(404) 656-4600

**Atlanta PO (Programs/IPS)**  
3201 Atlanta Industrial Pkwy.  
Atlanta, GA 30331  
(404) 505-0133

**Atlanta South PO1**  
1568 Willingham Dr.  
Suite G-102  
College Park, GA 30337  
(404) 559-6661

**Atlanta South PO2 (annex)**  
1568 Willingham Dr.  
Suite G-102  
College Park, GA 30349  
(404) 559-6661

# Directory

## Atlanta SSU

3201 Atlanta Ind.  
Pkwy  
Bldg. 300-Suite 303  
Atlanta, GA 30331  
(404) 505-2344

## Atlanta West PO

2001 MLK Jr., Dr.  
Suite 412  
Atlanta, GA 30310  
(404) 756-4432

## Augusta PO

901 Greene Street  
Augusta, GA 30901  
(706) 721-1122

## Bainbridge PO

P.O. Box 1044  
Bainbridge, GA  
39818  
(229) 248-2671

## Baxley PO

P.O. Box 898  
Baxley, GA 31515  
(912) 366-1064

## Blairsville PO

Box 7  
185 Wellborne St.  
Blairsville, GA  
30512  
(706) 781-2360

## Blakely PO

P.O. Box 772  
Blakely, GA 39824  
(229) 723-4277

## Blue Ridge PO

900 E. Main Street.  
Suite 9  
Blue Ridge, GA  
30513

## Brunswick PO

P.O. Box 178  
Brunswick, GA  
31521  
(912) 262-3065

## Buchanan PO

P.O. Box 156  
Buchanan, GA  
30113  
(770) 646-3810

## Cairo PO

P.O. Box 149  
Cairo, GA 39828  
(229) 377-5347

## Calhoun PO

P.O. Box 294  
Calhoun, GA  
30703  
(706) 624-1414

## Camilla PO

P.O. Box 342  
Camilla, GA 31730  
(229) 522-3572

## Canton PO

P.O. Box 448  
Canton, GA 30169  
(770) 479-2602

## Carnesville PO

P.O. Box 371  
Carnesville, GA  
30521  
(706) 384-4343

## Carrollton PO

205 Tanner Street  
Suite B  
Carrollton, GA  
30117  
(770) 836-6704

## Cartersville PO

P.O. Box 771  
Cartersville, GA  
30120  
(770) 387-3780

## Cedartown PO

P.O. Box 1771  
Cedartown, GA  
30125  
(770) 749-2206

## Clarksville PO

P.O. Box 2556  
Clarksville, GA  
30523  
(706) 754-9315

## Claxton PO

P.O. Box 26  
Claxton, GA 30417  
(912) 739-9612

## Clayton PO

25 Courthouse Sq.  
Suite 109  
Clayton, GA 30525  
(706) 782-4727

## Cleveland PO

59 South Main St.  
Suite J  
Cleveland, GA  
30528  
(706) 348-4884

## Columbus PO

P.O. Box 2337  
Columbus, GA  
31902  
(706) 649-7484

## Conyers PO

P.O. Box 473  
Conyers, GA 30012  
(770) 388-5011

## Cordele PO

1304 South Seventh  
St.  
Cordele, GA 31015  
(229) 276-2346

## Covington PO

P.O. Box 348  
Covington, GA  
30015  
(770) 784-2700

## Cumming PO

310 Tribble Gap Rd  
Cumming, GA  
30040  
(770) 781-2170

## Cuthbert PO

P.O. Box 365  
Cuthbert, GA 39840  
(229) 732-2123

## Dahlonega PO

163 Tipton Dr.  
Dahlonega, GA  
30533  
(706) 867-2929

## Dallas PO

P.O. Box 82  
Dallas, GA 30132  
(770) 443-7861

## Dalton PO

P.O. Box 747  
Dalton, GA 30722-  
0747  
(706) 272-2306

## Danielsville PO

P.O. Box 392  
Danielsville, GA  
30633  
(706) 795-3845

## Darien PO

P.O. Box 1238  
Darien, GA 31305  
(912) 437-5583

## Dawson PO

P.O. Box 387  
Dawson, GA 39842  
(229) 995-6459

## DeKalb Central PO (Admin. & Court Services)

547 Church Street  
1st Floor  
Decatur, GA 30030  
(404) 370-5113

## DeKalb North PO

LaVista Office Park  
2187 Northlake  
Pkwy. Bldg. 9  
Room 23  
Tucker, GA 30084  
(770) 414-3670

## Donalsonville PO

P.O. Box 245  
Donalsonville, GA  
39845  
(229) 524-2836

## Douglas PO

P.O. Box 1051  
Douglas, GA 31533  
(912) 389-4431

## Douglasville PO

8723 Hospital Dr.  
Suite 1  
Douglasville, GA  
30034  
(770) 489-3070

## Dublin PO

P.O. Box 2012, CSS  
Dublin, GA 31040  
(478) 275-6637

## Eastman PO

P.O. Box 4234  
Eastman, GA  
31023  
(478) 374-6501

## Eatonton PO

P.O. Box 4223  
Eatonton, GA  
31024  
(706) 213-2032

## Elberton PO

P.O. Box 725  
Elberton, GA 30635  
(706) 213-2032

## Elijay PO

368 Craig Street  
Suite 103  
East Elijay, GA  
30540  
(706) 635-5125

## Fayetteville PO

135-A Bradford Sq.  
Fayetteville, GA  
30215  
(770) 460-2730

## Fitzgerald PO

P.O. Box 1168  
Fitzgerald, GA  
31750  
(229) 426-5234

## Fort Valley PO

P.O. Box 754  
Fort Valley, GA  
31030  
(478) 825-3136

## Gainesville PO

P.O. Box 2436  
Gainesville, GA  
30504  
(770) 535-5710

## Gray PO

P.O. Box 753  
Gray, GA 31032  
(478) 986-6611

## Greensboro PO

P.O. Box 282  
Greensboro, GA  
30642  
(706) 453-7131

## Greenville PO

P.O. Box 582  
Greenville, GA  
30222  
(706) 672-4971

## Griffin PO

1435 N. Express-  
way Suite 302  
Griffin, GA 30223  
(770) 229-3132

## Hartwell PO

P.O. Box 715  
Hartwell, GA 30643  
(706) 856-2711

## Hazelhurst PO

P.O. Box 1060  
Hazelhurst, GA  
31539  
(912) 375-4441

## Hinesville PO

P.O. Box 94  
Hinesville, GA  
31310  
(912) 370-2571

## Homerville PO

110 Court Square  
Homerville, GA  
31310  
(912) 370-2571

## Jackson PO

286 Cedar Street  
Jackson, GA 30233  
(770) 504-2370

## Jasper PO

37 Court Street  
Jasper, GA 30143  
(706) 692-4805

## Jesup PO

P.O. Box 272  
Jesup, GA 31598  
(912) 427-5894

## LaFayette PO

114 East Patton St.  
LaFayette, GA  
30728-0423  
(706) 845-4125

## LaGrange PO

Rear 206 Ridley  
Ave  
LaGrange, GA  
30240  
(706) 845-4125

## Lakeland PO

P.O. Box 366  
Lakeland, GA  
31635  
(229) 482-3303

## Lawrenceville PO

P.O. Box 1305  
Lawrenceville, GA  
30046  
(770) 339-2222

## Louisville PO

P.O. Box 706  
Louisville, GA  
30434  
(478) 625-3648

## Lyons PO

P.O. Box 658  
Lyons, GA 30436  
(912) 526-8311

## Macon PO

200 Third Street  
Macon, GA 31201  
(478) 751-6092

## Marietta PO

P.O. Box 910  
Marietta, GA  
30061  
(770) 528-7950

## Marietta PO (suboffice)

2275 Northwest  
Pkwy. Suite 170  
Marietta, GA  
30067  
(770) 916-2115

## Marietta PO (North)

130 South Park Sq.  
Marietta, GA  
30061  
(770) 528-4923

## McDonough PO

45 Keys Ferry St.  
McDonough, GA  
30253  
(770) 954-2004

## McRae PO

P.O. Box 151  
McRae, GA 31055  
(229) 868-3200

## Milledgeville PO

P.O. Box 1808  
Milledgeville, GA  
31059  
(478) 445-4468

## Millen PO

P.O. Box 486  
Millen, GA 30442  
(478) 982-2050

# Directory

**Millen PO**

P.O. Box 486  
Millen, GA 30442  
(478) 982-2050

**Monroe PO**

P.O. Box 129  
Monroe, GA 30655  
(770) 267-1347

**Monticello PO**

1125B Fred Smith  
St.  
Monticello, GA  
31064  
(706) 468-4920

**Morgan PO**

P.O. Box 143  
Morgan, GA 39866  
(229) 849-3795

**Morrow PO**

1331 Citizens Pkwy  
Suite 201  
Morrow, GA 30260  
(770) 960-4100

**Moultrie PO**

P.O. Box 1214  
Moultrie, GA  
31776  
(229) 891-7270

**Nashville PO**

111 South Davis St.  
Berrien Co. Bldg.  
Nashville, GA  
31639  
(229) 686-9329

**Newnan PO**

51-B Perry Street  
Newnan, GA 30263  
(770) 254-7204

**Oglethorpe PO**

P.O. Box 372  
Oglethorpe, GA  
31068  
(478) 472-3591

**Perry PO**

1010 Ball Street  
Perry, GA 31069  
(478) 988-6750

**Ringgold PO**

Catoosa Co. Court-  
house Room 204  
Ringgold, GA  
30726  
(706) 295-6323

**Rome PO**

400 Broad Street  
Suite 100  
Rome, GA 30161  
(706) 295-6323

**Sandersville PO**

P.O. Drawer 1015  
Sandersville, GA  
31082  
(478) 553-2450

**Savannah PO**

P.O. Box 9504  
Savannah, GA  
31412  
(912) 651-2204

**Soperton PO**

P.O. Box 262  
Soperton, GA  
30457  
(912) 529-6283

**Springfield PO**

P.O. Box 820  
Springfield, GA  
31329  
(912) 754-3257

**Statesboro PO**

P.O. Box 238  
Statesboro, GA  
30459  
(912) 871-1119

**Swainsboro PO**

P.O. Drawer S  
Swainsboro, GA  
30401  
(478) 289-2602

**Sylvania PO**

655 Frontage Rd.  
East  
Sylvania, GA  
30467  
(912) 564-7382

**Sylvester PO**

P.O. Box 876  
Sylvester, GA  
31791  
(229) 777-2183

**Thomaston PO**

113-B East County  
Rd  
Thomaston, GA  
30286  
(706) 646-6000

**Thomasville PO**

P.O. Box 1602  
Thomasville, GA  
31799  
(229) 225-4021

**Thomson PO**

P.O. Box 337  
Thomson, GA  
30824  
(706) 595-7404

**Tifton PO**

P.O. Box 2006  
Tifton, GA 31793  
(229) 386-3503

**Toccoa PO**

115-B West Doyle  
St.  
Toccoa, GA 30577  
(706) 282-4570

**Valdosta PO**

P.O. Box 6  
Valdosta, GA  
31603  
(229) 333-5274

**Warner Robins PO**

281-D Carl Vinson  
Pkwy.  
Warner Robins, GA  
31088  
(478) 929-6832

**Washington PO**

P.O. Box 867  
Washington, GA  
30673  
(706) 678-2373

**Watkinsville PO**

P.O. Box 92  
Watkinsville, GA  
30677  
(706) 769-3959

**Waycross PO**

P.O. Box 819  
Waycross, GA  
31502  
(912) 287-6535

**Waynesboro PO**

P.O. Box 89  
Waycross, GA  
31502  
(912) 287-6535

**Winder PO**

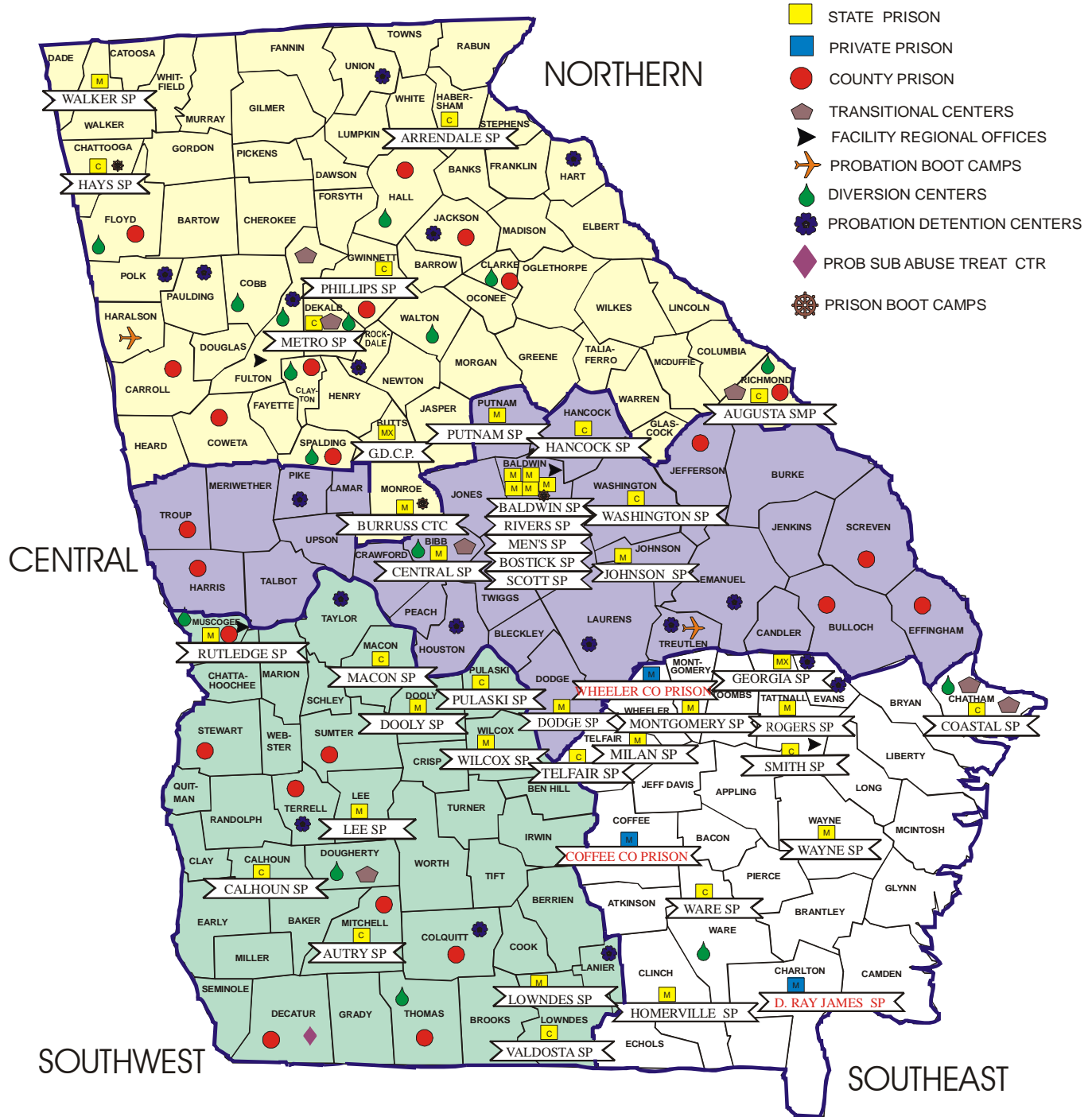
22 Lee Street  
Winder, GA 30680  
(770) 307-3065

**Woodbine PO**

P.O. Box 400  
Woodbine, GA  
31569  
(912) 576-5998

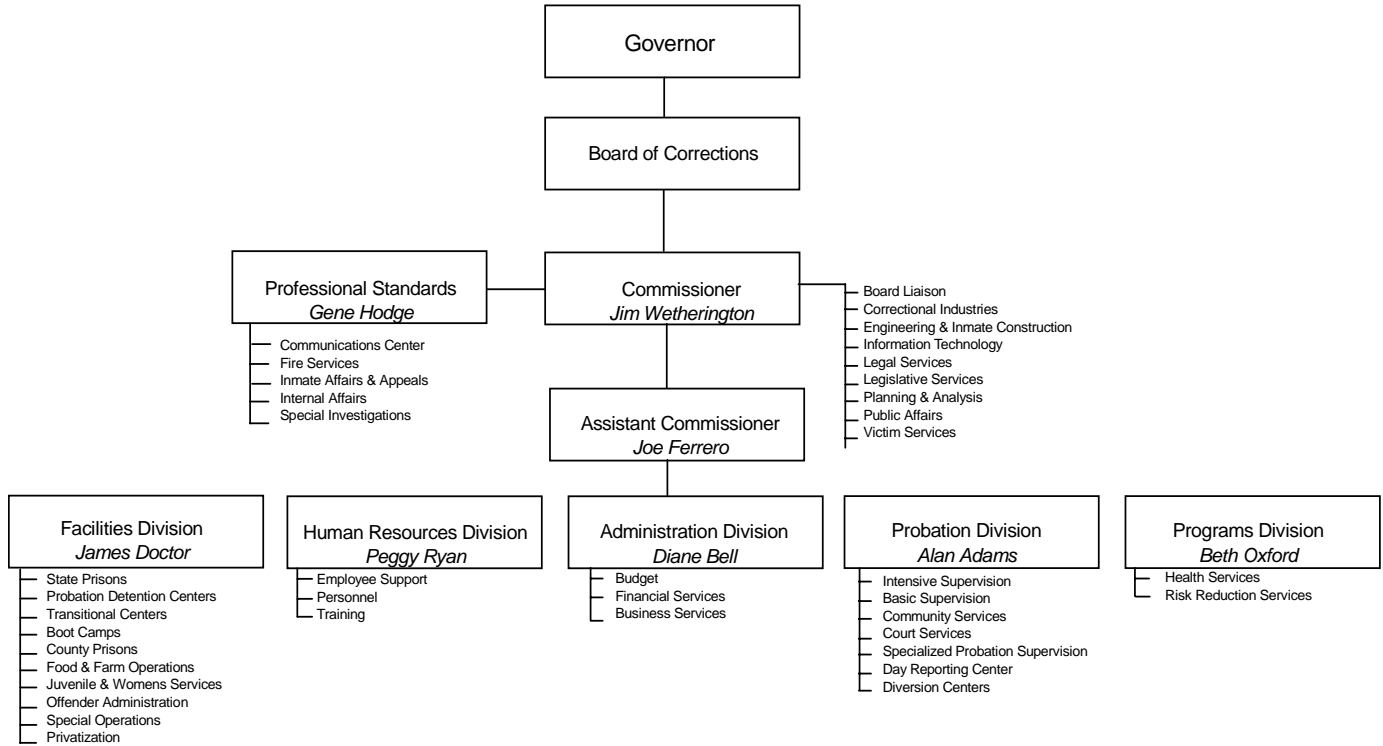


# Departmental Map

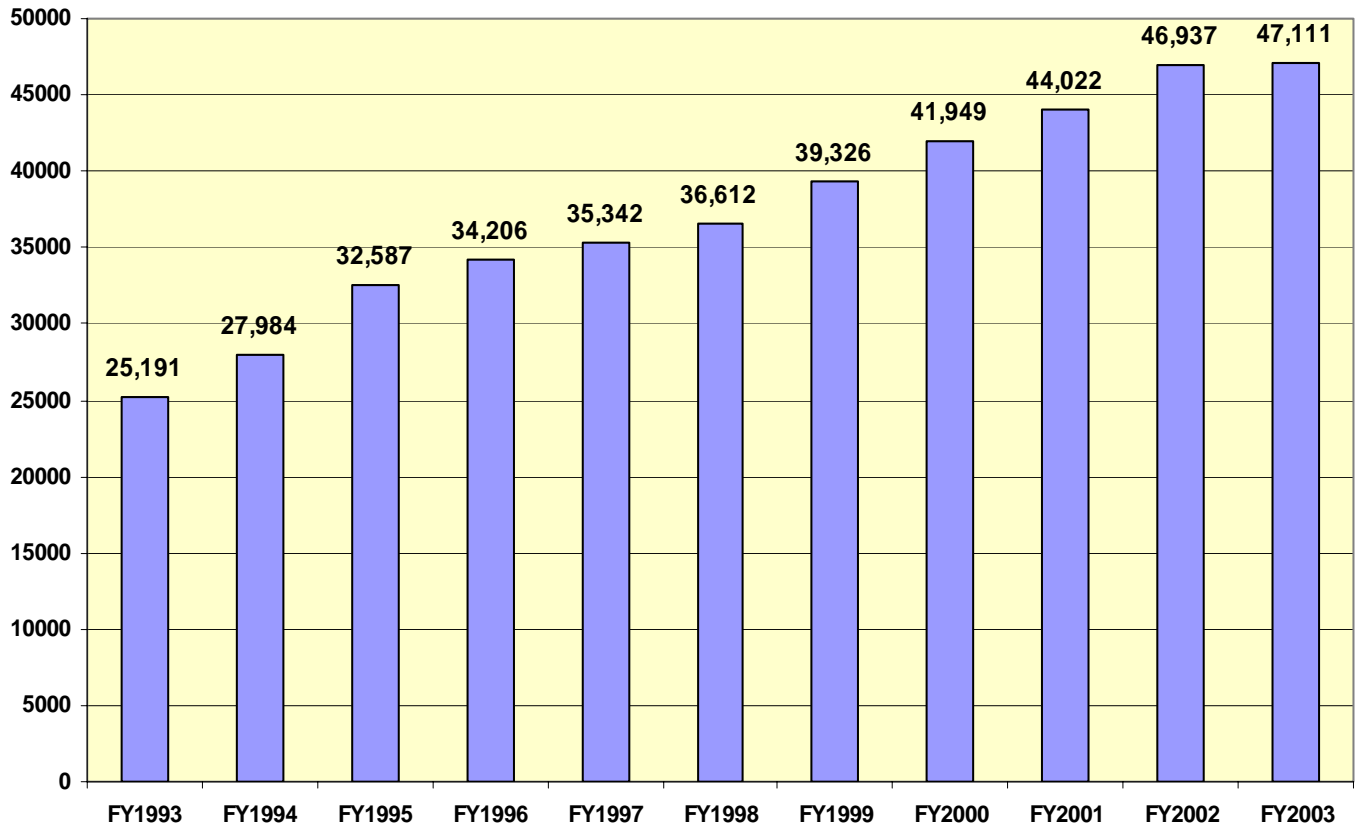


Note: The letters accompanying the "state prison" icon denote the facility's security level:  
 MX - Maximum, C - Close, M - Medium

# Organizational Chart



**Active Inmate Population  
Fiscal Year 1993 - Fiscal Year 2003**

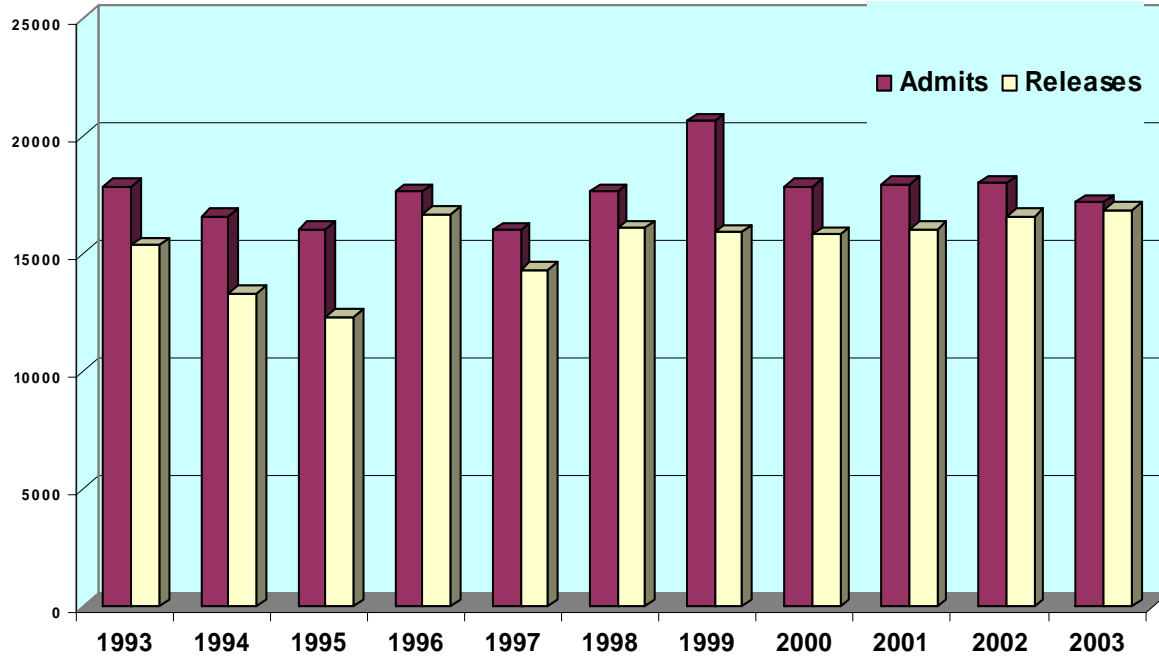


**Active Inmate Profile:**

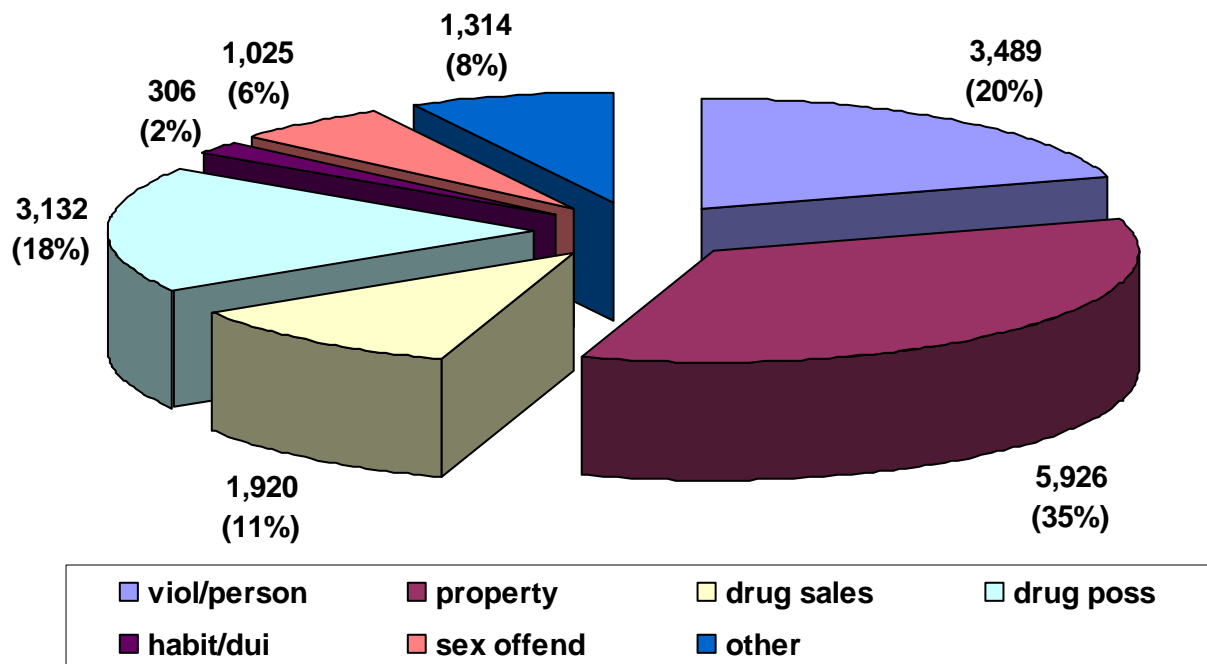
<b>Race:</b>	
Nonwhite	30,234 (64%)
White	16,877 (36%)
<b>Gender:</b>	
Male	44,020 (93%)
Female	3,091 (7%)
Average Age	35 years
Probation to Follow	19,565 (41%)
<b>Educational Level:</b>	
Up to 11th Grade	31,785 (68%)
GED or High School Graduate	14,212 (32%)
<b>Number of Prior GA Incarcerations:</b>	
Zero	26,966 (54%)
One	8,277 (18%)
Two or More	11,868 (28%)

# Inmate Admissions/Departures

## Inmate Admissions and Departures Fiscal Year 1993 - Fiscal Year 2003



## FY2003 Prison Admissions By Crime Type July 1, 2002 - June 30, 2003

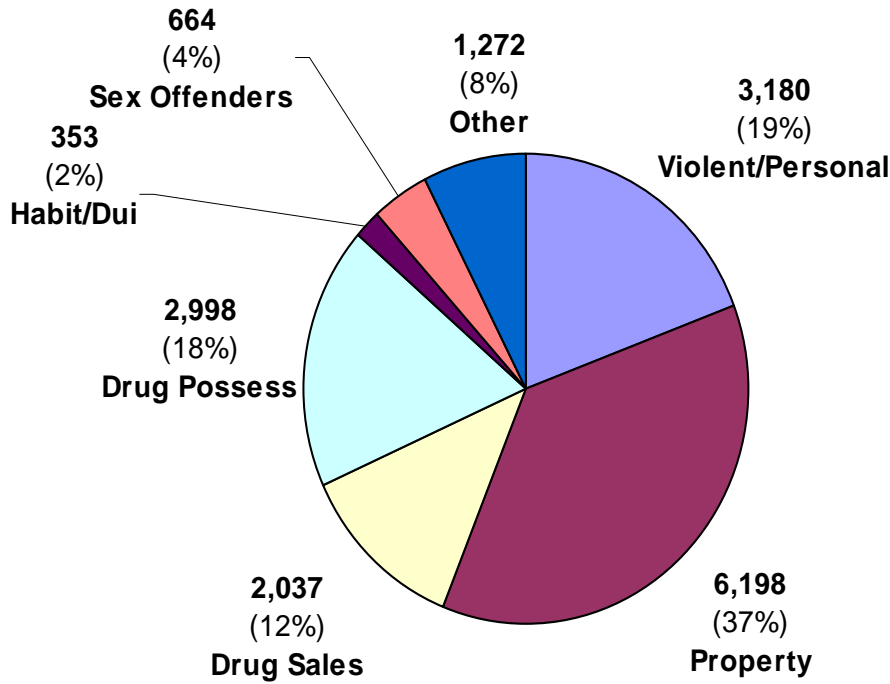


# Inmates by County of Conviction

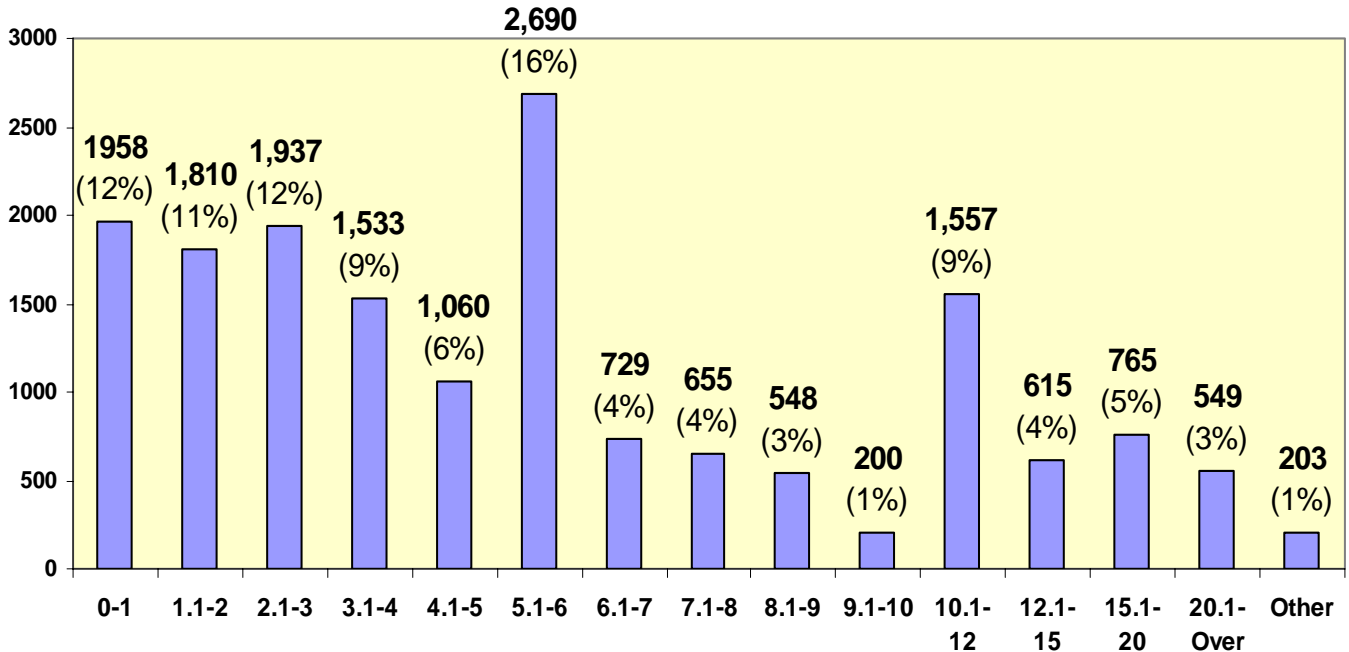
County	Men	Women	TOTAL	County	Men	Women	TOTAL	County	Men	Women	TOTAL
Appling	90	3	93	Fannin	127	10	137	Oglethorpe	56	4	60
Atkinson	42	3	45	Fayette	243	23	266	Paulding	184	13	197
Bacon	60	2	62	Floyd	725	84	809	Peach	94	3	97
Baker	18	3	21	Forsyth	186	16	202	Pickens	93	3	96
Baldwin	346	20	366	Franklin	122	6	128	Pierce	58	0	58
Banks	69	7	76	Fulton	3925	161	4086	Pike	36	3	39
Barrow	197	20	217	Gilmer	169	11	180	Polk	160	5	165
Bartow	399	36	435	Glascock	8	1	9	Pulaski	103	10	113
Ben Hill	200	15	215	Glynn	491	22	513	Putnam	130	5	135
Berrien	80	5	85	Gordon	267	28	295	Quitman	9	1	10
Bibb	989	47	1036	Grady	244	19	263	Rabun	53	2	55
Bleckley	122	8	130	Greene	130	5	135	Randolph	60	5	65
Brantley	36	2	38	Gwinnett	1313	114	1427	Richmond	1791	136	1927
Brooks	80	2	82	Habersham	94	6	100	Rockdale	316	28	344
Bryan	74	5	79	Hall	664	58	722	Schley	22	1	23
Bulloch	377	30	407	Hancock	30	2	32	Screven	150	11	161
Burke	214	10	224	Haralson	99	2	101	Seminole	77	8	85
Butts	136	7	143	Harris	105	3	108	Spalding	675	55	730
Calhoun	38	4	42	Hart	93	5	98	Stephens	131	6	137
Camden	95	7	102	Heard	48	3	51	Stewart	35	4	39
Candler	77	4	81	Henry	367	27	394	Sumter	203	12	215
Carroll	522	59	581	Houston	463	34	497	Talbot	37	3	40
Catoosa	210	22	232	Irwin	80	2	82	Taliaferro	11	1	12
Charlton	51	3	54	Jackson	208	10	218	Tattnall	106	7	113
Chatham	2148	140	2288	Jasper	52	2	54	Taylor	78	4	82
Chattahoochee	28	0	28	Jeff Davis	60	2	62	Terlfair	129	16	145
Chattooga	193	14	207	Jefferson	109	3	112	Terrell	86	4	90
Cherokee	485	61	546	Jenkins	108	3	111	Thomas	323	22	345
Clarke	465	30	495	Johnson	51	2	53	Tift	319	20	339
Clay	27	0	27	Jones	116	7	123	Toombs	274	23	297
Clayton	1723	172	1895	Lamar	94	6	100	Towns	25	3	28
Clinch	52	1	53	Lanier	47	1	48	Treutlen	39	1	40
Cobb	2104	181	2285	Laurens	233	13	246	Troup	656	41	697
Coffee	238	18	256	Lee	55	2	57	Turner	83	2	85
Colquitt	302	11	313	Liberty	251	16	267	Twiggs	44	0	44
Columbia	231	26	257	Lincoln	42	1	43	Union	46	2	48
Cook	131	14	145	Long	70	4	74	Upson	192	10	202
Coweta	424	23	447	Lowndes	557	30	587	Walker	290	25	315
Crawford	20	3	23	Lumpkin	65	3	68	Walton	285	23	308
Crisp	256	20	276	Macon	67	2	69	Ware	402	28	430
Dade	113	3	116	Madison	108	7	115	Warren	49	2	51
Dawson	78	4	82	Marion	40	2	42	Washington	104	8	112
Decatur	292	25	317	McDuffie	192	5	197	Wayne	142	8	150
DeKalb	2803	150	2953	McIntosh	74	1	75	Webster	10	0	10
Dodge	196	16	212	Meriwether	205	17	222	Wheeler	45	2	47
Dooly	120	5	125	Miller	30	1	31	White	67	6	73
Dougherty	921	62	983	Mitchell	202	15	217	Whitfield	674	84	758
Douglas	754	72	826	Monroe	126	6	132	Wilcox	54	4	58
Early	71	3	74	Montgomery	49	2	51	Wilkes	68	5	73
Echols	12	0	12	Morgan	111	8	119	Wilkinson	49	4	53
Effingham	148	13	161	Murray	166	9	175	Worth	150	5	155
Elbert	166	12	178	Muscogee	1509	105	1614	<b>TOTAL</b>	<b>43,958</b>	<b>3,049</b>	<b>47,007</b>
Emanuel	162	6	168	Newton	379	28	407				
Evans	76	3	79	Oconee	55	4	59				

# Inmate Releases

## FY2003 Prison Releases by Crime Type

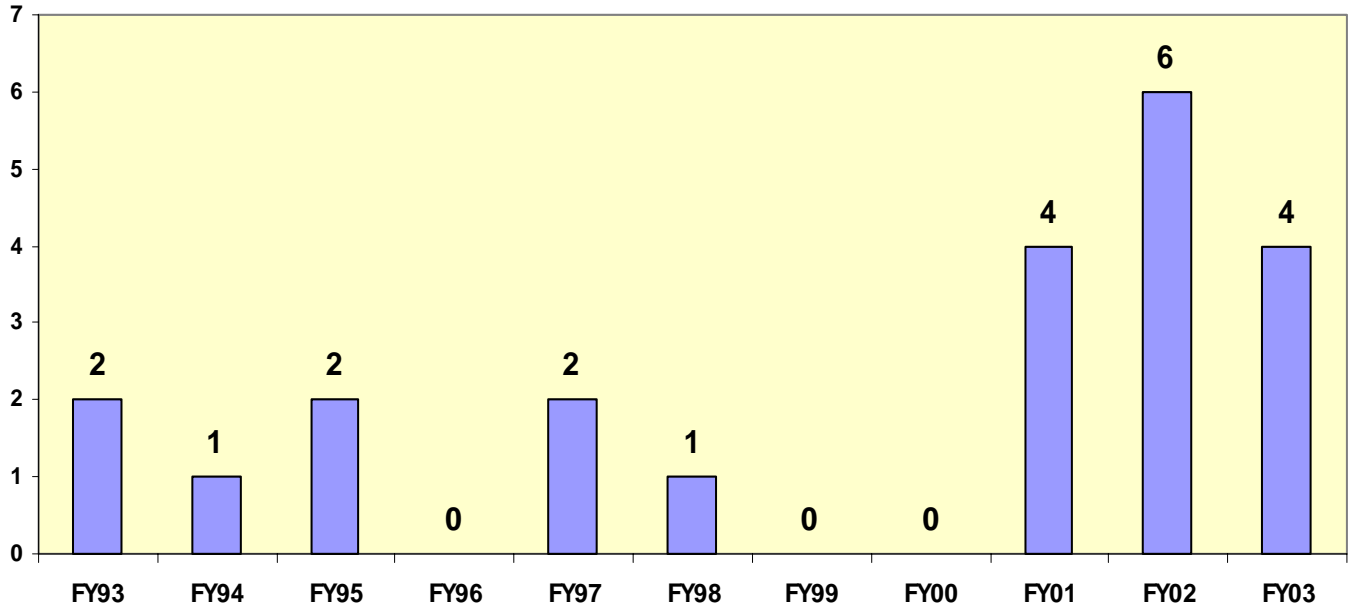


## FY2003 Prison Releases by Sentence Length July 1, 2002 - June 30, 2003

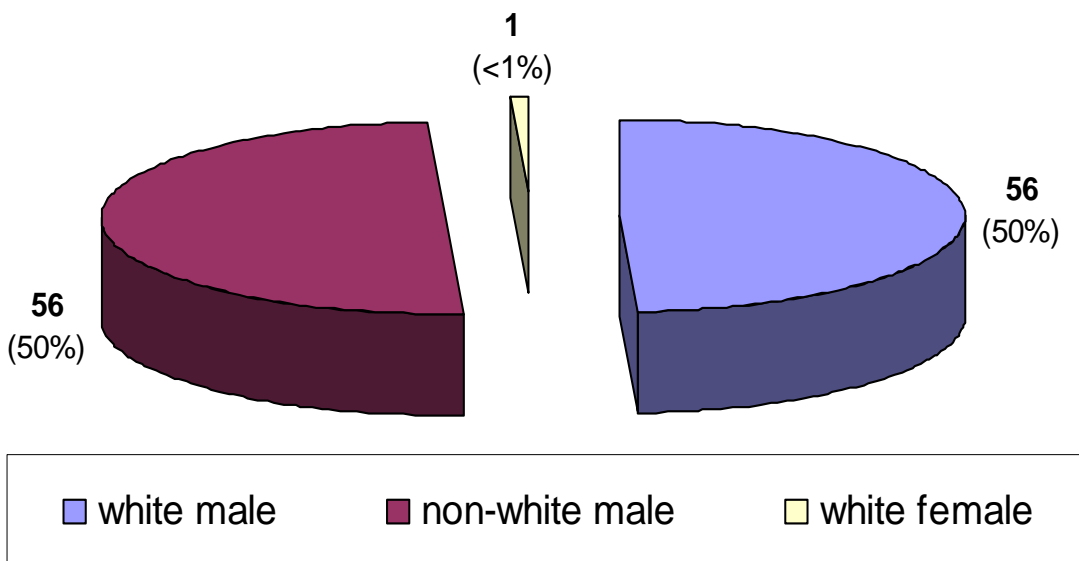


# Executions

## Number of Georgia Executions



## Active Inmates Under Death Sentence by Race & Gender



<u>PRISON</u>	<u>Number of Inmates</u>	<u>Total Costs</u>	<u>Annual Cost Per Inmate</u>	<u>Daily Cost Per Inmate</u>
Arrendale State Prison	1,221	28,482,924	23,332	63.92
Augusta State Medical Prison (1)	1,195	35,529,717	29,742	81.49
Autry State Prison	1,494	23,394,324	15,662	42.91
Baldwin State Prison (4)	945	18,397,299	19,463	53.32
Bostick State Prison	608	9,823,075	16,150	44.25
Burruss Correctional Training Center (2,4)	437	9,198,171	21,065	57.71
Calhoun State Prison	1,242	16,416,034	13,221	36.22
Central State Prison	786	13,559,389	17,260	47.29
Coastal State Prison	1,474	23,632,649	16,032	43.92
Dodge State Prison (4)	1,159	16,216,817	13,993	38.34
Dooly State Prison	1,139	14,283,737	12,536	34.35
GA Diagnostic & Classification Prison	1,827	29,990,129	16,413	44.97
Georgia State Prison	1,218	35,695,280	29,308	80.30
Hancock State Prison	1,388	19,159,727	13,808	37.83
Hays State Prison (4)	1,448	24,145,650	16,681	45.70
Homerville State Prison	194	3,569,803	18,449	50.54
Johnson State Prison	862	13,581,926	15,750	43.15
Lee State Prison	726	10,882,902	15,001	41.10
Macon State Prison	1,369	20,439,617	14,927	40.90
Men's State Prison	671	11,453,714	17,078	46.79
Metro State Prison	882	20,188,491	22,902	62.75
Milan State Prison	256	4,222,416	16,494	45.19
Montgomery State Prison (4)	392	5,906,472	15,071	41.29
Phillips State Prison (3)	1,047	20,817,911	19,888	54.49
Pulaski State Prison	1,039	21,785,085	20,971	57.45
Putnam State Prison	135	3,322,682	24,628	67.47
Rivers State Prison	1,096	18,559,096	16,927	46.38
Rogers State Prison	1,248	17,580,645	14,086	38.59
Rutledge State Prison	586	10,398,715	17,748	48.62
Scott State Prison (3)	1,239	16,973,039	13,699	37.53
Smith State Prison (3)	1,213	17,249,265	14,216	38.95
Telfair State Prison	1,066	15,881,249	14,904	40.83
Valdosta State Prison	1,157	25,709,615	22,226	60.89
Walker State Prison	617	8,049,892	13,054	35.76
Ware State Prison	1,296	22,373,347	17,270	47.32
Washington State Prison (3)	1,209	20,706,935	17,124	46.91
Wayne State Prison	198	3,672,220	18,523	50.75
Wilcox State Prison	1,349	17,398,796	12,895	35.33
<b>State Prison Totals</b>	<b>37,424</b>	<b>648,648,751</b>	<b>17,332</b>	<b>47.49</b>

Notes:

- (1) Augusta State Medical Prison—Primary Medical Support Location
- (2) Burruss CTC—Supports Georgia Public Safety Training Center
- (3) Includes Probation Detention Center Beds (Average Population of 42 at Phillips SP, 75 at Scott SP, 88 at Smith SP, and 147 at Washington SP)
- (4) Includes Inmate Boot Camp Beds (Average Population of 166 at Baldwin SP, 136 at Burruss CTC, 66 at Dodge SP, 163 at Hays SP, and 28 at Montgomery SP).



# Center Costs

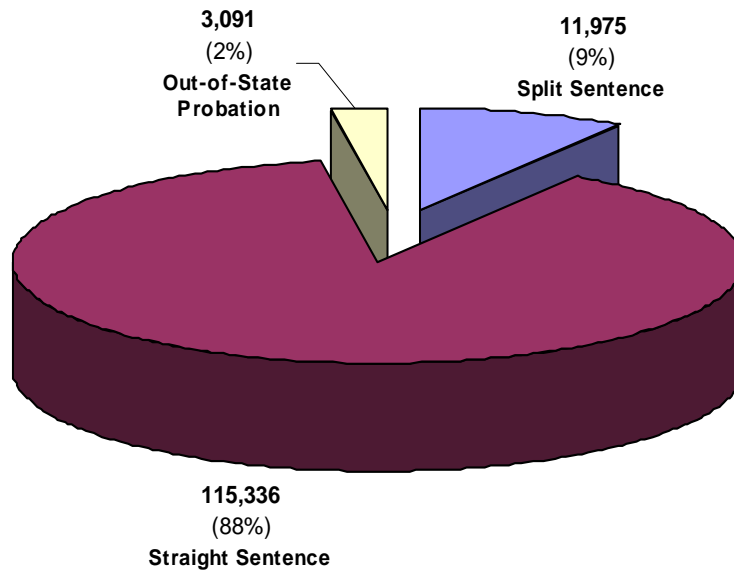
<u>FACILITY</u>	<u>Number of Offenders</u>	<u>Total Costs</u>	<u>Annual Cost Per Offender</u>	<u>Daily Cost Per Offender</u>
<i><b>Transitional Centers</b></i>				
Albany TC	148	2,507,601	16,981	46.52
Atlanta TC	242	3,784,385	15,627	42.81
Augusta TC	162	3,394,579	20,976	57.47
Macon TC	126	2,333,032	18,516	50.73
Metro TC	124	2,109,353	17,034	46.67
Savannah Men's TC	193	3,405,801	17,677	48.43
Savannah Women's TC	70	1,519,444	21,655	59.33
<i><b>Diversion Centers</b></i>				
Albany DC	64	1,320,874	20,505	56.18
Alcovy DC	50	986,721	19,867	54.43
Athens DC	67	1,433,431	21,315	58.40
Augusta DC	81	1,720,552	21,133	57.90
Clayton DC	48	1,144,709	23,931	65.56
Cobb DC	44	1,062,703	24,107	66.05
Columbus DC	66	1,316,929	19,828	54.32
Gainesville DC	97	1,771,130	18,290	50.11
Gateway DC	99	1,815,472	18,354	50.28
Griffin DC	71	1,401,964	19,886	54.48
Helms DC	77	1,300,161	20,390	55.86
Macon DC	97	1,735,864	17,926	49.11
Rome DC	47	1,300,161	27,614	75.65
Rouse DC	56	1,567,483	27,908	76.46
Savannah DC	50	1,163,159	23,224	63.63
Thomasville DC	49	1,186,301	24,169	66.22
Bainbridge PSATC*	178	4,456,360	24,989	68.46
<i><b>Detention Centers</b></i>				
Central PDC	192	3,328,845	17,300	47.40
Colwell PDC	205	3,498,306	17,100	46.85
Emanuel PDC	219	3,812,982	17,378	47.61
IW Davis PDC	193	3,249,970	16,876	46.23
Larmore PDC	199	3,055,125	15,391	42.17
McEver PDC	191	3,057,908	16,003	43.84
Northwest PDC	202	2,962,830	14,643	40.12
Patten PDC	198	3,452,800	17,402	47.68
Paulding PDC	210	3,061,541	14,573	39.93
Rockdale/DeKalb PDC	201	3,406,033	16,974	46.50
Southeast PDC	198	3,322,853	16,825	46.09
Southwest PDC	194	3,151,971	16,275	44.59
Terrell PDC	188	3,070,341	16,295	44.65
West Central PDC	161	3,346,866	20,756	56.87
Western PDC	193	3,214,655	16,663	45.65
Women's PDC	186	3,453,385	18,542	50.80
Whitworth Parole Revocation Center**	240	4,426,412	18,411	50.44
<i><b>Probation Boot Camps</b></i>				
Treutlen PBC	334	4,876,594	14,608	40.02
West Georgia PBC	<b>157</b>	<b>3,098,293</b>	<b>19,682</b>	<b>53.92</b>

\*Bainbridge PSATC is a specialized, one of a kind substance abuse treatment center.

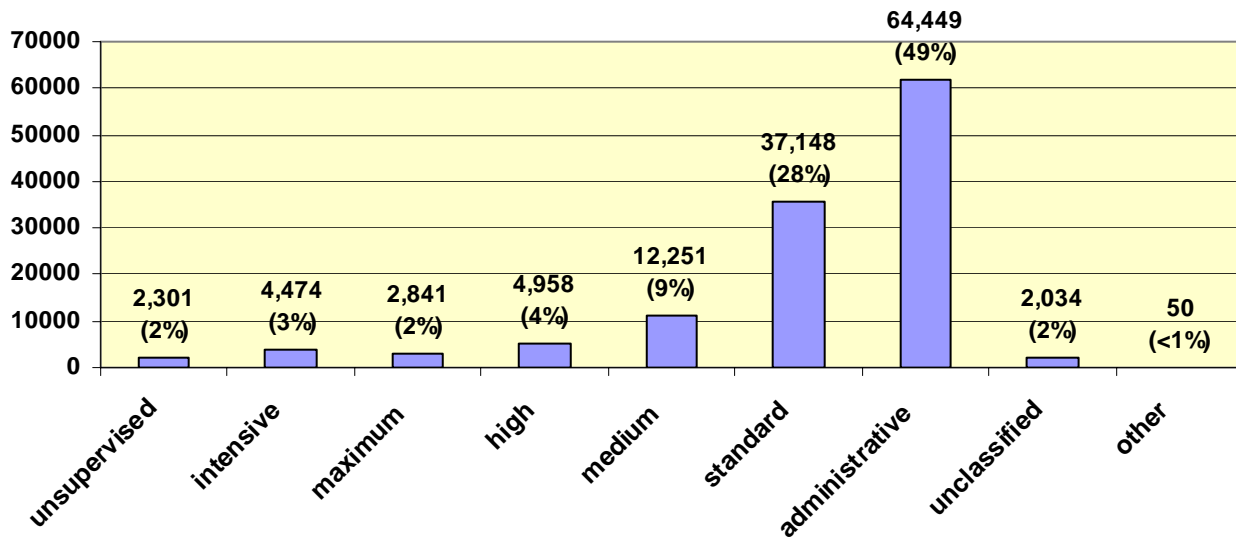
\*\*Whitworth PRC is a specialized, one of a kind center for parole revocators.

# Probationers

### Active Probationers by Case Type



### Active Probationers by Supervision Type



### Active Probationer Profile:

**Race:**

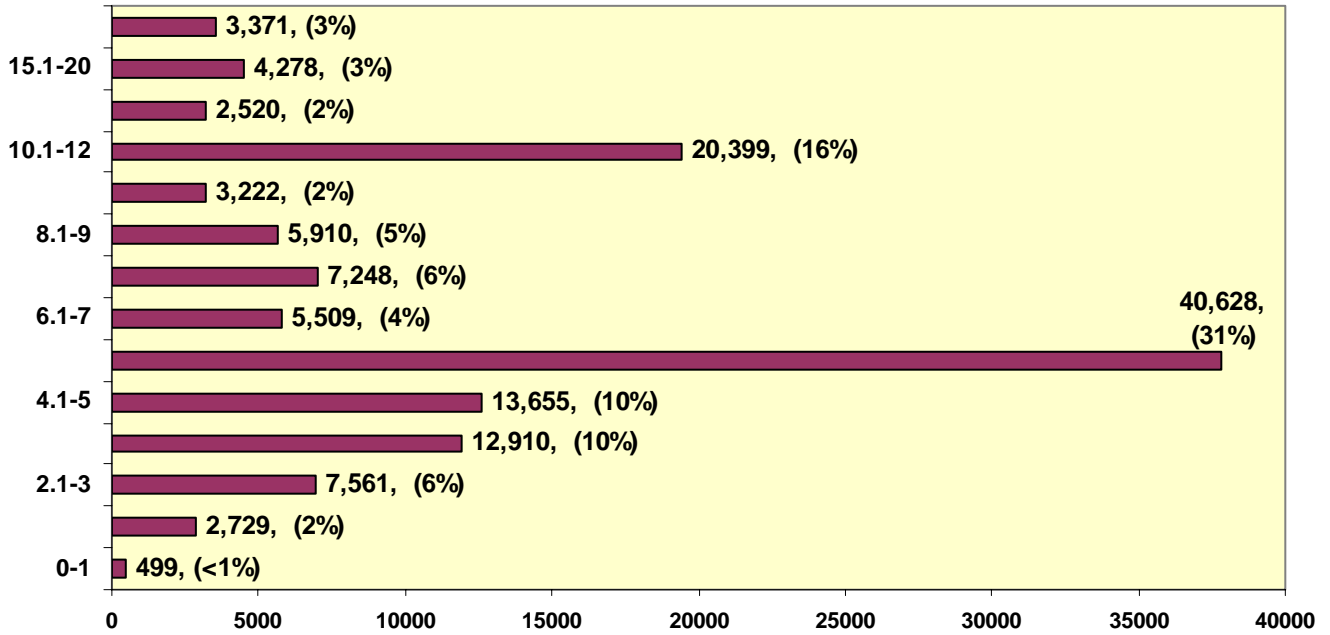
Nonwhite 68,673 (53%)  
 White 61,832 (47%)

**Gender:**

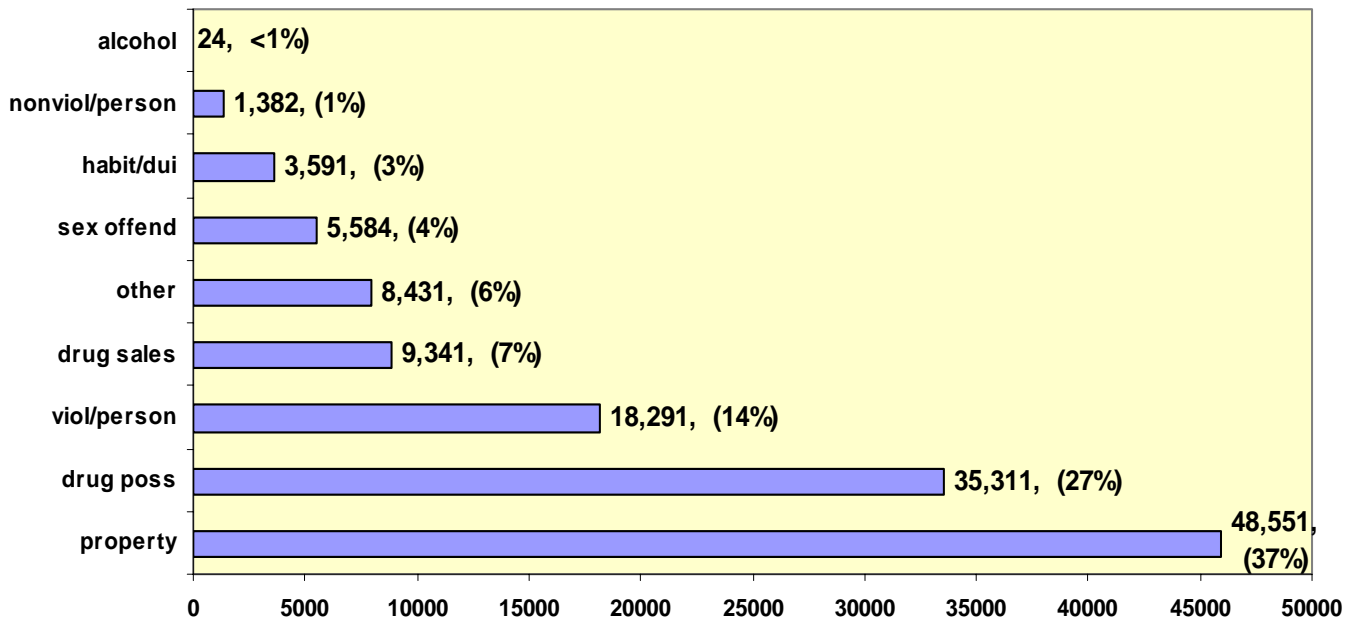
Male 101,923 (78%)  
 Female 28,582 (22%)

# Probationers

## Active Probationers by Sentence Length



## Active Probationers by Crime Type



# Probation by County of Conviction

County	Men	Women	TOTAL	County	Men	Women	TOTAL	County	Men	Women	TOTAL
Appling	228	42	270	Fannin	344	103	447	Oglethorpe	135	23	158
Atkinson	147	33	180	Fayette	638	242	880	Paulding	695	137	832
Bacon	110	19	129	Floyd	1571	595	2166	Peach	310	57	367
Baker	60	4	64	Forsyth	703	210	913	Pickens	295	101	396
Baldwin	999	242	1241	Franklin	307	69	376	Pierce	83	27	110
Banks	223	65	288	Fulton	7110	1368	8478	Pike	78	10	88
Barrow	542	169	711	Gilmer	446	136	582	Polk	659	145	804
Bartow	1619	484	2103	Glascock	16	0	16	Pulaski	121	37	158
Ben Hill	322	94	416	Glynn	1007	283	1290	Putnam	362	69	431
Berrien	286	71	357	Gordon	883	300	1183	Quitman	48	16	64
Bibb	2787	848	3635	Grady	403	82	485	Rabun	169	46	215
Bleckley	225	64	289	Greene	347	70	417	Randolph	172	56	228
Brantley	117	18	135	Gwinnett	4894	1411	6305	Richmond	2310	825	3135
Brooks	217	38	255	Habersham	277	74	351	Rockdale	578	203	781
Bryan	150	31	181	Hall	1351	473	1824	Schley	103	21	124
Bulloch	826	200	1026	Hancock	121	15	136	Screven	222	62	284
Burke	207	44	251	Haralson	345	75	420	Seminole	209	46	255
Butts	329	86	415	Harris	223	40	263	Spalding	781	302	1083
Calhoun	130	31	161	Hart	226	50	276	Stephens	247	88	335
Camden	327	88	415	Heard	89	23	112	Stewart	140	28	168
Candler	116	41	157	Henry	1440	429	1869	Sumter	1031	277	1308
Carroll	856	263	1119	Houston	1352	419	1771	Talbot	83	10	93
Catoosa	554	188	742	Irwin	151	23	174	Taliaferro	24	4	28
Charlton	86	20	106	Jackson	578	172	750	Tattnall	150	23	173
Chatham	2922	1033	3955	Jasper	159	28	187	Taylor	131	17	148
Chattahoochee	43	11	54	Jeff Davis	186	49	235	Terlfair	201	73	274
Chattooga	384	114	498	Jefferson	232	31	263	Terrell	230	65	295
Cherokee	1574	449	2023	Jenkins	139	29	168	Thomas	1159	266	1425
Clarke	1081	246	1327	Johnson	156	26	182	Tift	612	144	756
Clay	67	10	77	Jones	399	79	478	Toombs	282	100	382
Clayton	1486	601	2087	Lamar	279	63	342	Towns	81	22	103
Clinch	155	45	200	Lanier	186	26	212	Treutlen	137	31	168
Cobb	7890	2288	10178	Laurens	719	143	862	Troup	804	275	1079
Coffee	499	128	627	Lee	446	78	524	Turner	156	32	188
Colquitt	751	149	900	Liberty	233	66	299	Twiggs	115	31	146
Columbia	511	146	657	Lincoln	102	21	123	Union	133	50	183
Cook	416	98	514	Long	81	9	90	Upson	270	77	347
Coweta	775	259	1034	Lowndes	1759	477	2236	Walker	680	195	875
Crawford	110	21	131	Lumpkin	290	96	386	Walton	1202	247	1449
Crisp	502	162	664	Macon	291	42	333	Ware	394	115	509
Dade	282	82	364	Madison	283	77	360	Warren	83	3	86
Dawson	228	92	320	Marion	85	19	104	Washington	211	53	264
Decatur	580	161	741	McDuffie	277	60	337	Wayne	446	123	569
DeKalb	4669	1331	6000	McIntosh	117	38	155	Webster	72	8	80
Dodge	253	84	337	Meriwether	290	61	351	Wheeler	70	15	85
Dooley	203	48	251	Miller	137	24	161	White	229	63	292
Dougherty	3685	996	4681	Mitchell	512	115	627	Whitfield	1092	419	1511
Douglas	2525	856	3381	Monroe	310	82	392	Wilcox	81	13	94
Early	239	66	305	Montgomery	102	20	122	Wilkes	143	29	172
Echols	31	4	35	Morgan	253	36	289	Wilkinson	132	37	169
Effingham	356	121	477	Murray	247	71	318	Worth	311	49	360
Elbert	327	81	408	Muscogee	2252	844	3096	Out of State	2335	737	3072
Emanuel	236	64	300	Newton	1315	319	1634				
Evans	90	22	112	Oconee	129	36	165	<b>TOTAL</b>	<b>101,918</b>	<b>28,580</b>	<b>130,498</b>



### **Americans With Disabilities Act**

If you are an individual with a disability and wish to have this publication in an alternative format, please contact:

Office of Public Affairs - Georgia Department of Corrections  
2 Martin Luther King, Jr. Drive  
East Tower, Room 854  
Atlanta, Georgia 30334-4900

Telephone: 404-656-9772

Fax: 404-656-6434

